



**ADDPRO  
NETWORK**

**DIGITAL  
MARKETING  
AGENCY**



*Amplifying your digital growth*

**VISION TO HELP 5000  
BUSINESSES TO GROW  
DIGITALLY BY 2025**



# ADDPRO STORY

- A magnificent ten years of growth and learnings from a small ground breaking team
- To a vibrant group of digital marketing professionals.
- our legend began in 2010 with a vision to bridge the gap between the demand and supply.
- Make a difference through digital marketing.



ADDPRO  
NETWORK



# ADDPRO TEAM



**Sabu**  
Director Marketing



**Dhilip**  
VP Marketing



**Nandan**  
Principal Consultant



**Juvita**  
Admin & Finance



**Ameer**  
Creative Head



**Kiran Kumar**  
HR Head



ADDPRO  
NETWORK

# ADDPRO TEAM



**Arun**  
Digital Marketing Manager



**Balasubramani**  
Digital Marketing Executive



**Kanishaga**  
Content Writer



**Naka Minati**  
Senior UI Developer



**Chiranjeevi**  
Web Developer



**Sujyothi**  
Senior Content Writer





# ADDPRO TEAM



**Nireeksha**  
IT Project Coordinator Lead



**Sujitha**  
SEO Executive & Project  
Co-Ordinator



**Madhumitha**  
Office Admin



**Suhasini**  
Web Designer



**Britto Manickaraj**  
Graphics Designer



**Akash**  
SEO Executive

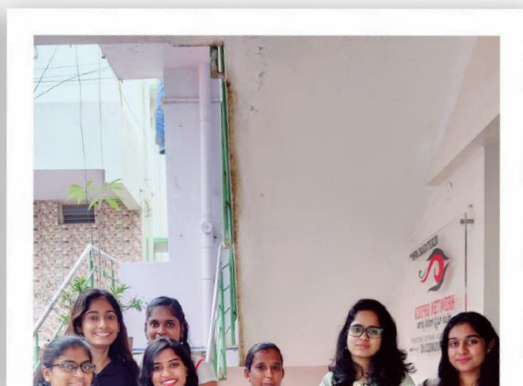
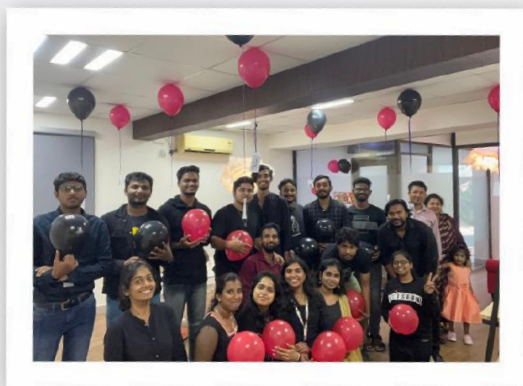




# ADDPRO TEAM



ADDPRO  
NETWORK





# ADDPRO ACHIEVEMENTS



10

YEARS OF  
EXPERIENCE

800+

CLIENTS  
SERVED

1M+

LEADS  
GENERATED

90%

CLIENT  
RETENTION





# OUR PARTNERS



# ADDPRO CLIENTELE





ADDPRO CLIENTELE



# ADDPRO CLIENTELE



RCM BANGALORE



An **IBMR - ATMA** initiative



*Brindavan Group of Institutions*



INDO ASIAN ACADEMY EDUCATION TRUST<sup>®</sup>  
**INDO ASIAN ACADEMY**  
**GROUP OF INSTITUTIONS**  
Accredited by NAAC





I do what is **Right** for the customer,  
if my product is on  
**NO Value to You**, your Money is of  
**NO Value to Me.**



WHY ADDPRO



# RITES

Strategy

- R No **Risk**
- I Increase **Profit**
- T Efficient **Team**
- E Reduce **Expenditure**
- S Be **Stress** Free



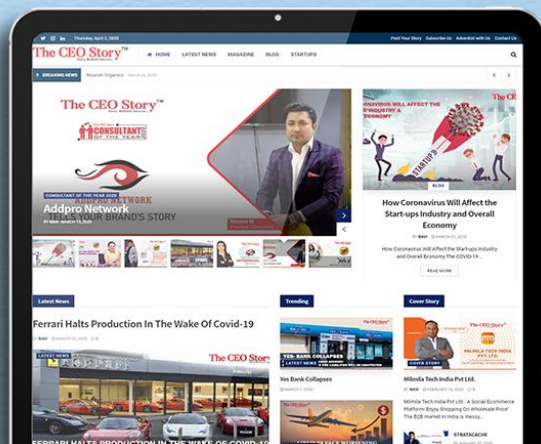


# ADDPRO AWARDS & RECOGNITION



**siliconindia**

**BEST DIGITAL  
MARKETING  
COMPANY OF  
THE YEAR - 2020**

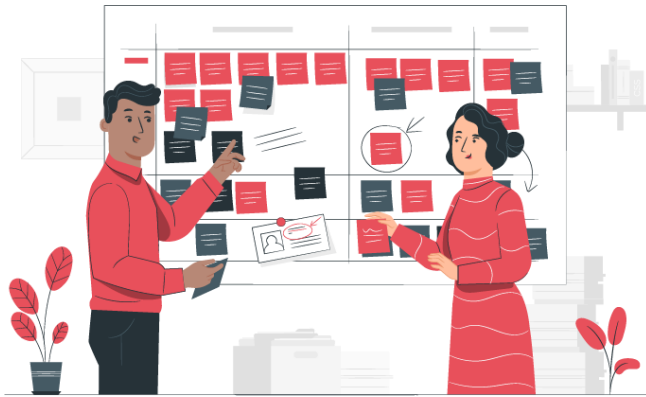


**The CEO Story™**  
Story Behind Success...

**BEST DIGITAL  
MARKETING  
CONSULTANT OF  
THE YEAR - 2020**



# ADDPRO PROCESS



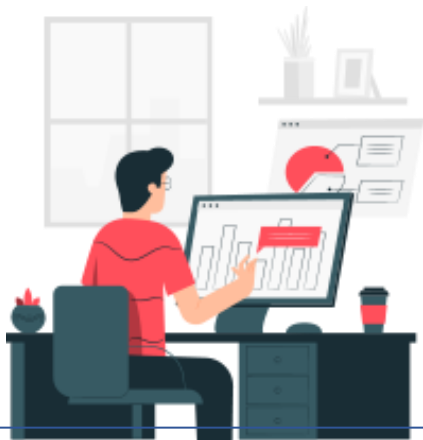
*Identifying Audience*



*Analyzation & Planning*



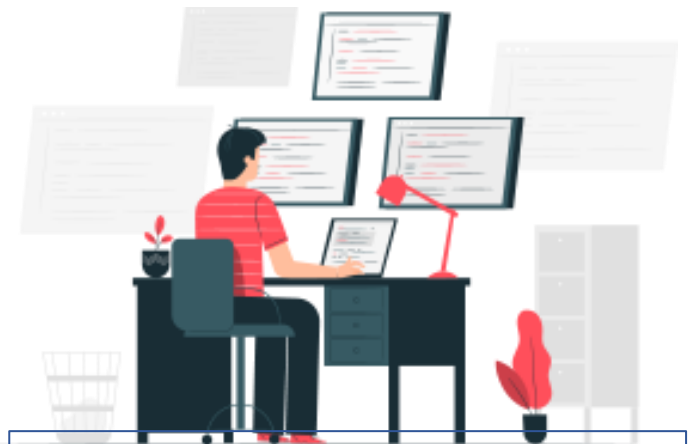
*Sales Focused Website*



*Evaluating & Monitoring Growth*



*Deployment in Digital Platform*



*Strategic Content Design & Development*



## DIGITAL MARKETING

Just a website will not help you reach your audience

**SEO**

**Social Media Marketing**

**Email Marketing**

**WhatsApp Marketing**

**Content Marketing**

## DIGITAL DESIGN

If your design is weak your marketing is blunt

**Website UI & UX**

**eCommerce**

**Online Catalogs**

**& Brochures**

## GRAPHIC DESIGN

Design is the base where we start

**Brand Manual**

**Brochure Design**

**Event Design**

## CORPORATE PRESENTATION

The first step to your pitch is your presentation

**PowerPoint Presentation (PPT)**

**Corporate Videos**

**Product Explainers**

## OFFLINE MARKETING

Just a website will not help you reach your audience

**Airport Ads**

**In-flight Magazine ad**

**Look walkers**

**Brochures and leaflet**

**Hoardings & Signage**

**Autorickshaw advertising**

**Bus Advertising**

**Radio Ads**

**Tv Commercials**

**Social Media Ads**





“

Ignoring *digital* marketing



is like opening a business, but not telling anyone.



# SEARCH ENGINE MARKETING



## Ad Words

Team incorporates Ad words, which helps in assimilating large sect of the audience, by using apt and crisp keywords that would aid in attracting visitors from every end.



## Organic SEO

Team develops a strategy based on the product features to target the demographic audience. We adopt the best SEO techniques which help in converting a large number of users into customers.



## Display Ads

Team supports effective online advertising by delivering general advertisements and brand messages to site visitors.

# SOCIAL MEDIA MARKETING

**3x Times**  
Faster Reach

**Be There**  
Where your  
audience are

**Get Viral**  
Let your brand be  
seen



Facebook  
LinkedIn  
Instagram  
Twitter



# EMAIL MARKETING



## **Converting new sign-ups into new customers**

As audience become more and more selective about the information they receive in their inbox, it's important for your business to provide targeted, high-quality, memorable email communications that will engage audiences and be relevant to them.

Our email specialists will work on effective subject lines, pre-headers, and finally schedule your emails to send at peak time or local time-zone.





# WHATSAPP MARKETING

Whatsapp marketing services enables us to send bulk notifications, messages to clients and potential clients. Sending out bulk notifications of events, promotions and updates raises visibility and market awareness.





# CONTENT MARKETING

Content marketing companies and “digital content” is not exactly anything digital to begin with, evolving from ideas of creativity of script and graphics. It is as primitive and yet sophisticated and refined a craft as projecting your product or service in scripted language, in the best light, revealing all of its features and benefits in the most accurate, eloquent, descriptive factual and flattering fashion. The whole content marketing process involves our analysis of your product or service, demographics and market analytics, from which the process of keyword rich content spawns.



# OFFLINE MARKETING



Offline marketing, also known as traditional marketing, refers to any promotional and advertising activities not conducted on the internet or through digital channels. It encompasses a wide range of strategies and tactics businesses use to reach their target audience through physical and non-digital means. It is often contrasted with online or digital marketing, which relies on the internet and electronic devices.





# Offline Marketing campaigns

## Airport Ads

Catching eyeballs of **elite audience** is a task and Airport is one such place where this can be achieved





# Offline Marketing campaigns

## In-flight Magazine ad

Be there when they fly the most ideal time a consumer spends is in flight right time to pitch in our brand



# Offline Marketing campaigns

## Lookwalkers

A easy solutions to reach consumers at busy streets showcasing our product range on backs of individuals help getting the brand in-between potential crowd



# Lookwalkers





# Offline Marketing campaigns

## Brochures and leaflet

Traditional way of publicity still makes big impacts with Paper inserts and handouts campaign it will reach and create wide brand immuration and impact



# Offline Marketing campaigns

## Hoardings & Signages

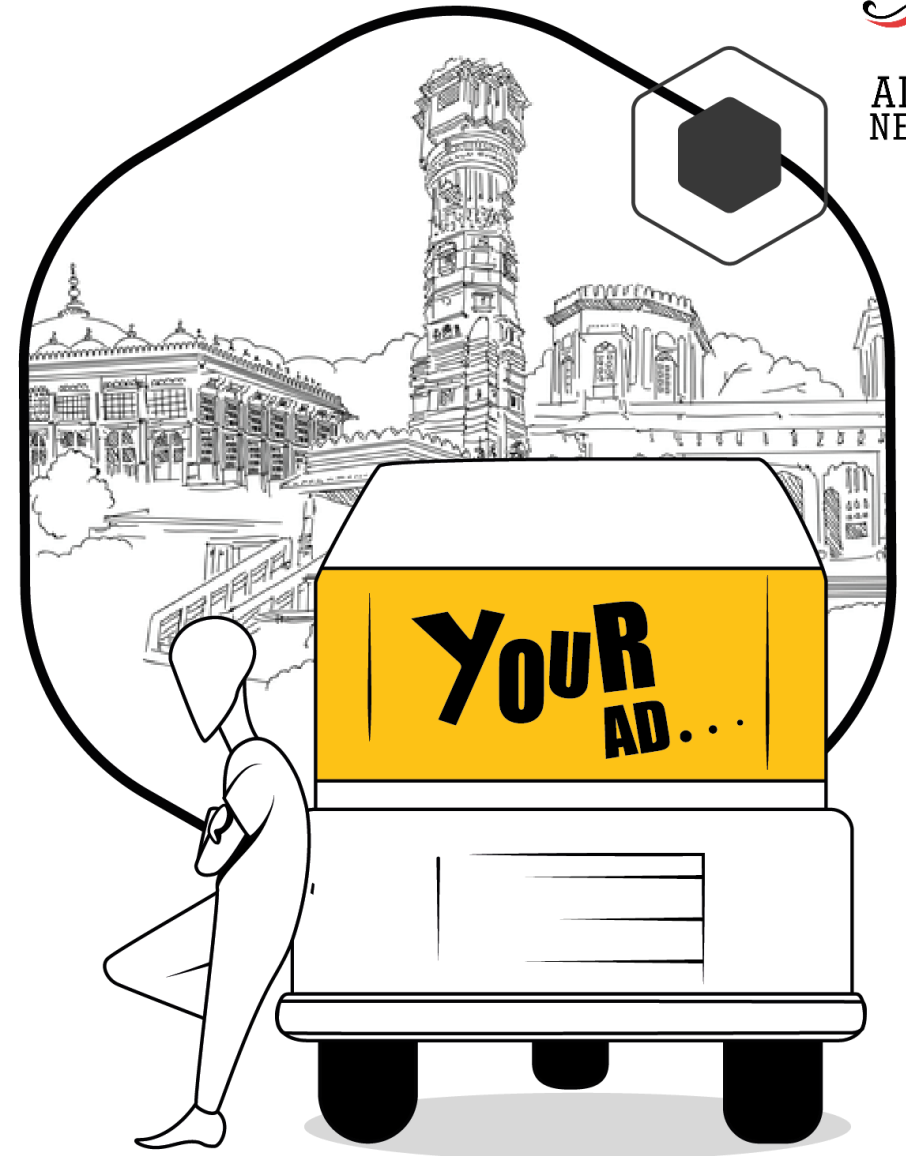
Ideal way to get established in minds of end consumer on way their home, rushing to office or even just traveling around town



# Offline Marketing campaigns

## Autorickshaw advertising

What better than a moving possets who sneak into any path showcasing your brand to every driver who he passes through





# Authorickshaw ads



# Offline Marketing campaigns



## Bus Advertising

One more on wheel ad but this gives a huge brand impact due to its scale and visible reach compare to other formats



# Offline Marketing campaigns

## Radio Ads

Sound remains more than visuals, this format is evergreen helping the brand retain in listeners mind when ever the come across products related to brand



# Offline Marketing campaigns

## Tv Commercials

An idiot box create more impact than a sensible salesman and its proven over the years and we should not ignore this format



# Online Marketing campaigns

## Social Media Ads

A biggest influencer today is social media have to be at right time on right media to influence the consumer to demand our brand





# PERFORMANCE MARKETING



Performance-based marketing is one such method that stands out for its immense innovation. In simple terms, performance marketing is an interactive advertising approach where the cost of an ad is determined by predefined parameters such as reach, engagement, lead generation, and sales. This type of advertising is particularly well-suited for businesses that primarily utilize the Internet to reach their target audience. The popularity of performance marketing stems from the fact that every advertising dollar spent yields a positive return on investment (ROI).



AT THE END WHAT MATTERS IS RESULTS  
**ACCELERATE YOUR 360° DIGITAL MARKETING PERFORMANCE**



**We are your Growth Partner to drive your results**

WE BELIEVE IN  
**ROI DRIVEN RESULTS**

THROUGH WIDE RANGE OF PERFORMANCE MARKETING TOOLS



Affiliate Marketing

Sponsored Content

Market & Consumer Research

Integrated Creative Strategy





# WHY CHOOSE PERFORMANCE MARKETING?

## Brand awareness

Through affiliates and agencies with their own established audiences, you can reach new audiences and increase traffic to your site.

## Trackable performance

Performance marketing is measurable and transparent. In fact, brands can now see the entire click-to-consume path of each buyer, and identify where to invest more and in which partners, which channels and produce better results.

## Lower risk

Since affiliates are paid only after a desired action takes place, the CPA (Cost Per Acquisition) is often lower and the ROI higher.



 **Meta**  
Business Partner

  
Google Partner

PREMIER 2023

# PRESS RELEASE



Deciphering your brand's objectives and measuring success can be an intricate job — and sometimes discouraging. That's where our press release services come into play, we focus on creating brand value, reach more audience, and credibility. We are connected with major digital publishers to connect your business with prospective clients/customers.

**Business Standard**

**OUTLOOK**  
THE WEEKLY NEWSMAGAZINE

**ANI**  
Asian News International



# WEB UI & UX DESIGN

The most efficient user interface (UI) spawns from being a player in the big picture of the user experience. Keep in mind, we the UI UX design agency the professionals in the know, know what works for one site may not work for another, that's where we the UI design agency make the difference, in researching, designing and creating the experience of a unique user interface design. Our UI design is focused on the look and feel of the screen that the user interacts with.





# E-COMMERCE

If you own a tangible store, without any online shopping web design you are severely handicapping your gross potential without an ecommerce portal. Physical, face to face retail is driven by branding and relationships, this when augmented with an online portal is also driven by traffic from search engines. This additional source of business could be the major chunk of your business.



# GRAPHIC DESIGN SERVICES



## Design is the base where we start

Graphic design is more than just design, providing many more benefits than simply making something look good. Its importance cannot be underestimated, when acknowledged and used as an effective business tool, it can accrue huge benefits.



Brand Manual | Corporate Identity | Brochure Design | Event Design

# CORPORATE PRESENTATION SERVICE



**No matter how you cook,  
You need to present it well.**

Some of the benefits of a skillfully crafted presentation also demonstrate the professional tone of your organization. We craft presentations to inform, educate, motivate, and persuade, a paradigm shift.



PowerPoint Presentation | Corporate Videos | Product Explainers | 2d & 3d Animation





The man who **stops digital marketing** to save money is like the man who **stops the clock to save time.**





ADDPRO SHOWCASE



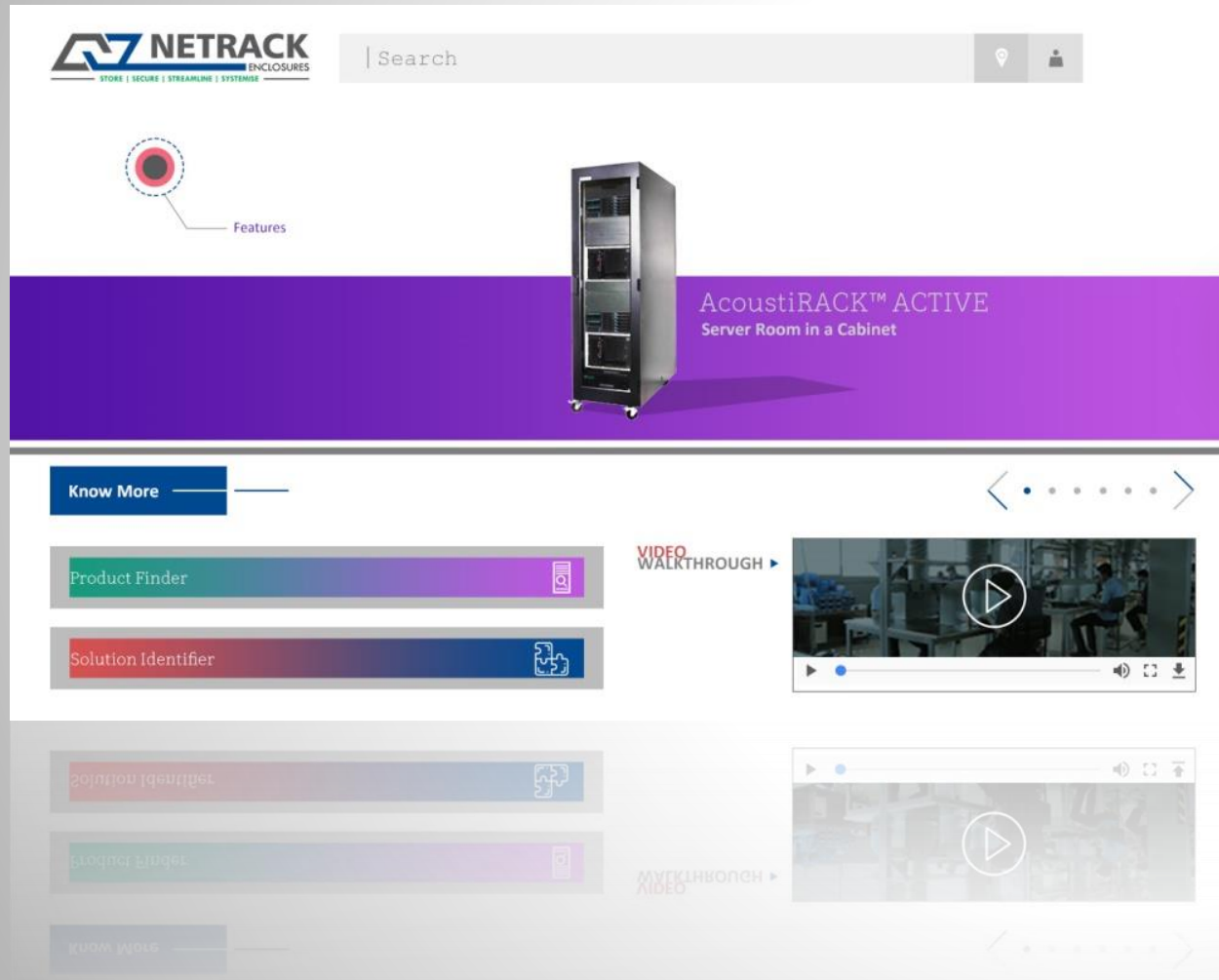
ADDPRO  
NETWORK

IN  
UI/UX



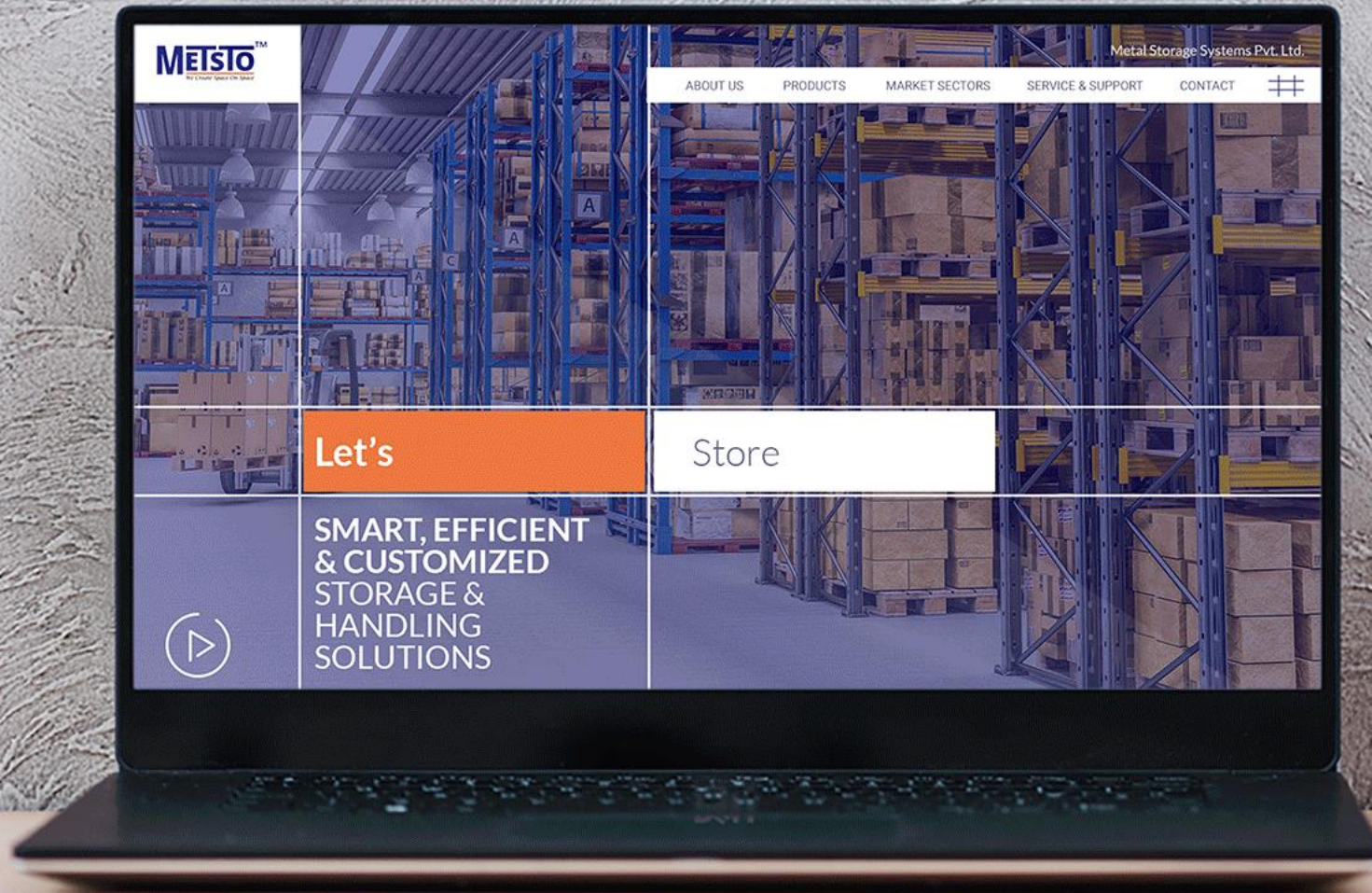


# ADDPRO SHOWCASE UI/UX





# ADDPRO SHOWCASE UI/UX





# ADDPRO SHOWCASE UI/UX





# ADDPRO SHOWCASE UI/UX

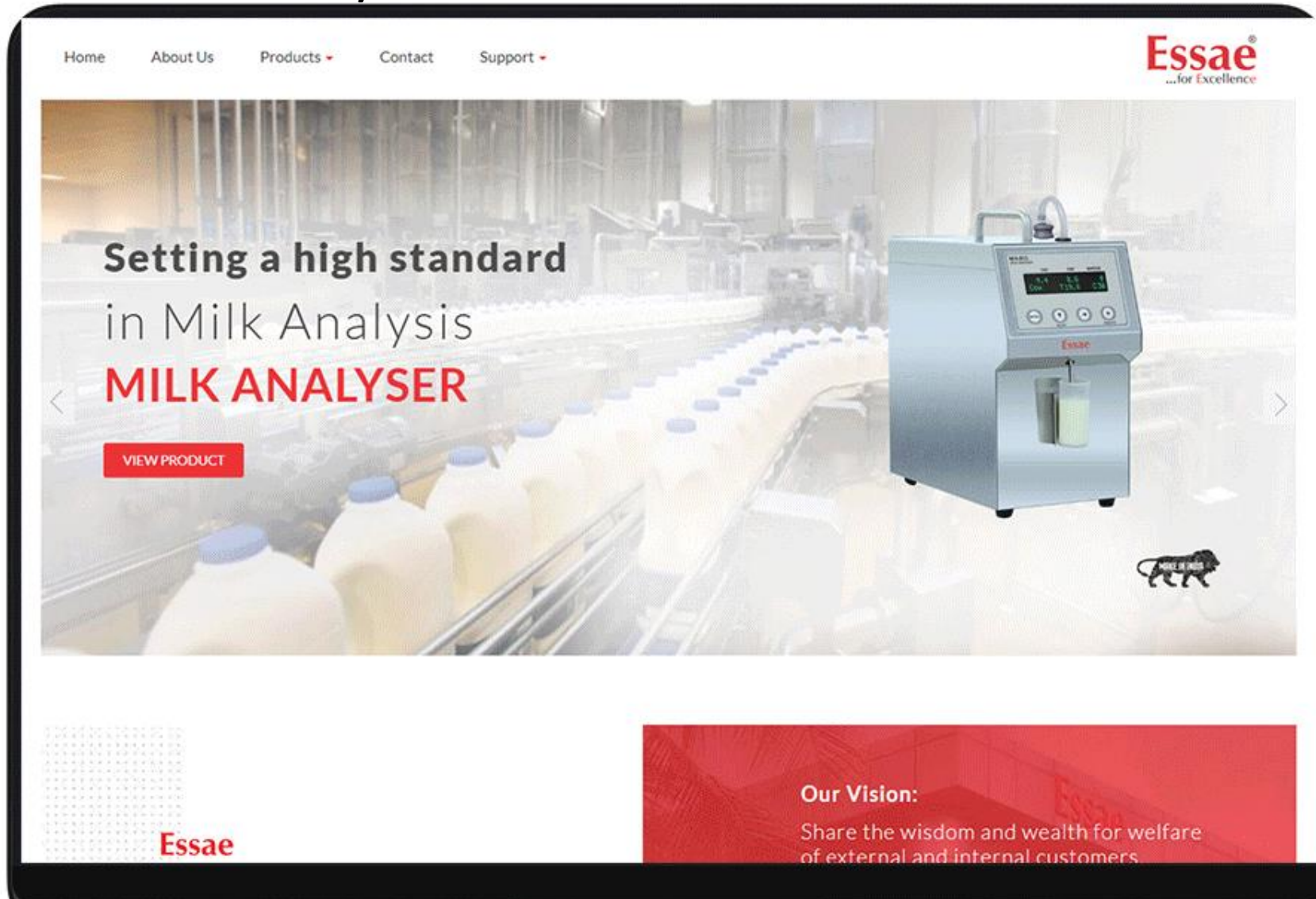


# ADDPRO SHOWCASE UI/UX





# ADDPRO SHOWCASE UI/UX



Home About Us Products Contact Support

**Essae**  
...for Excellence

Setting a high standard  
in Milk Analysis  
**MILK ANALYSER**

VIEW PRODUCT

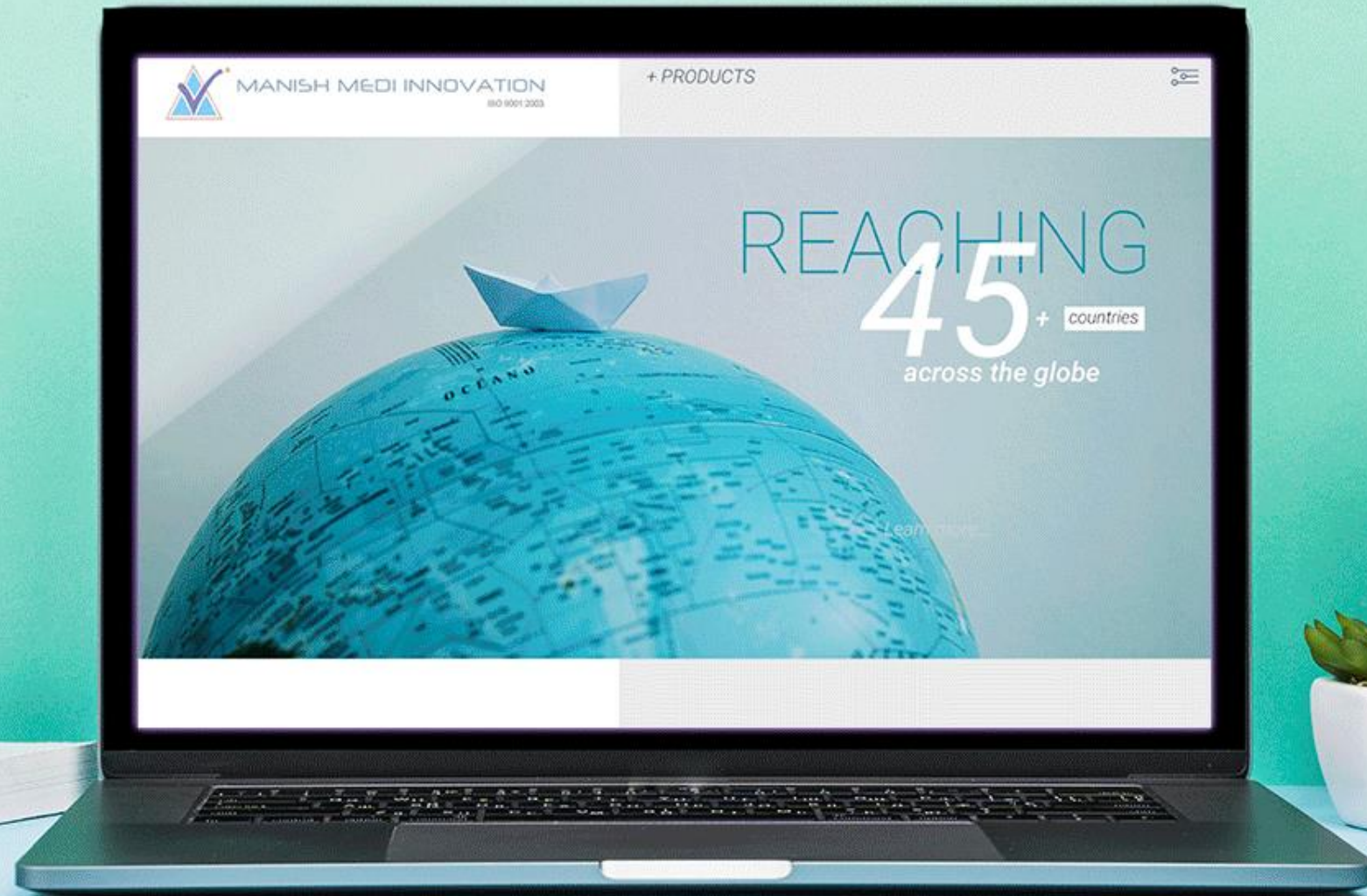
**Essae**

**Our Vision:**

Share the wisdom and wealth for welfare  
of external and internal customers.

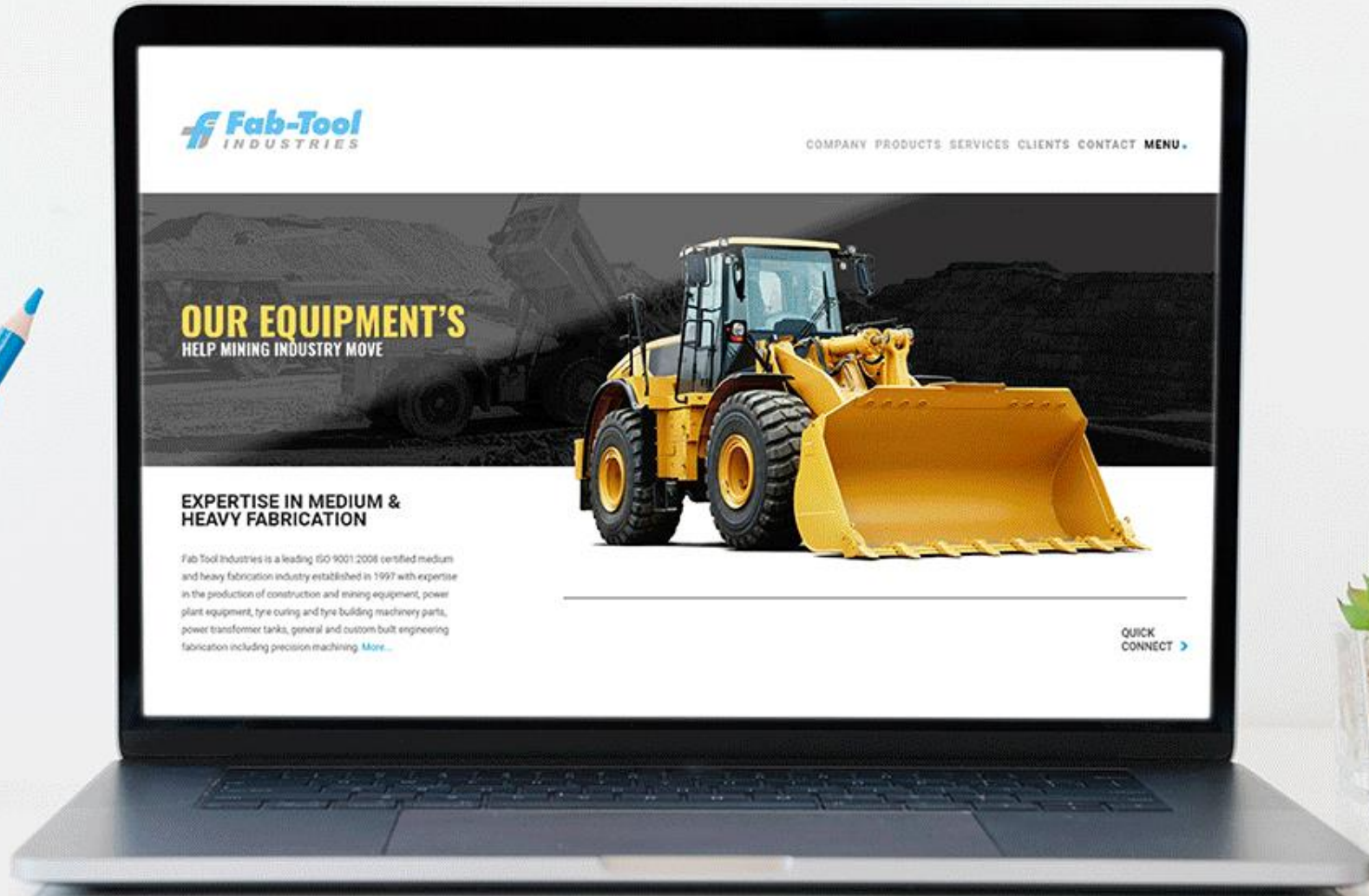


# ADDPRO SHOWCASE UI/UX





# ADDPRO SHOWCASE UI/UX



**Fab-Tool**  
INDUSTRIES

COMPANY PRODUCTS SERVICES CLIENTS CONTACT MENU

**OUR EQUIPMENT'S**  
HELP MINING INDUSTRY MOVE

## EXPERTISE IN MEDIUM & HEAVY FABRICATION

Fab Tool Industries is a leading ISO 9001:2008 certified medium and heavy fabrication industry established in 1997 with expertise in the production of construction and mining equipment, power plant equipment, tyre curing and tyre building machinery parts, power transformer tanks, general and custom built engineering fabrication including precision machining. [More...](#)

QUICK  
CONNECT >

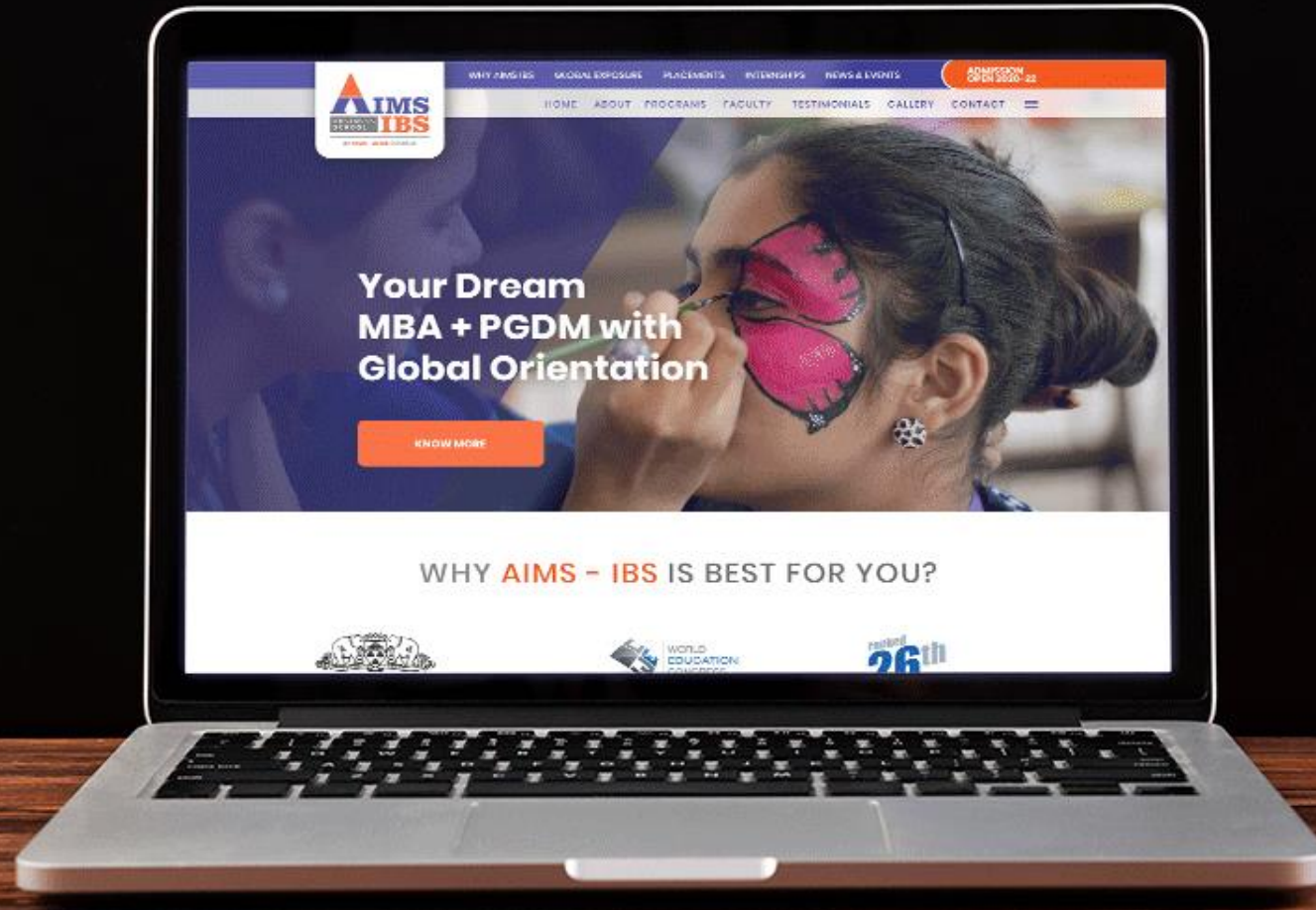


# ADDPRO SHOWCASE UI/UX





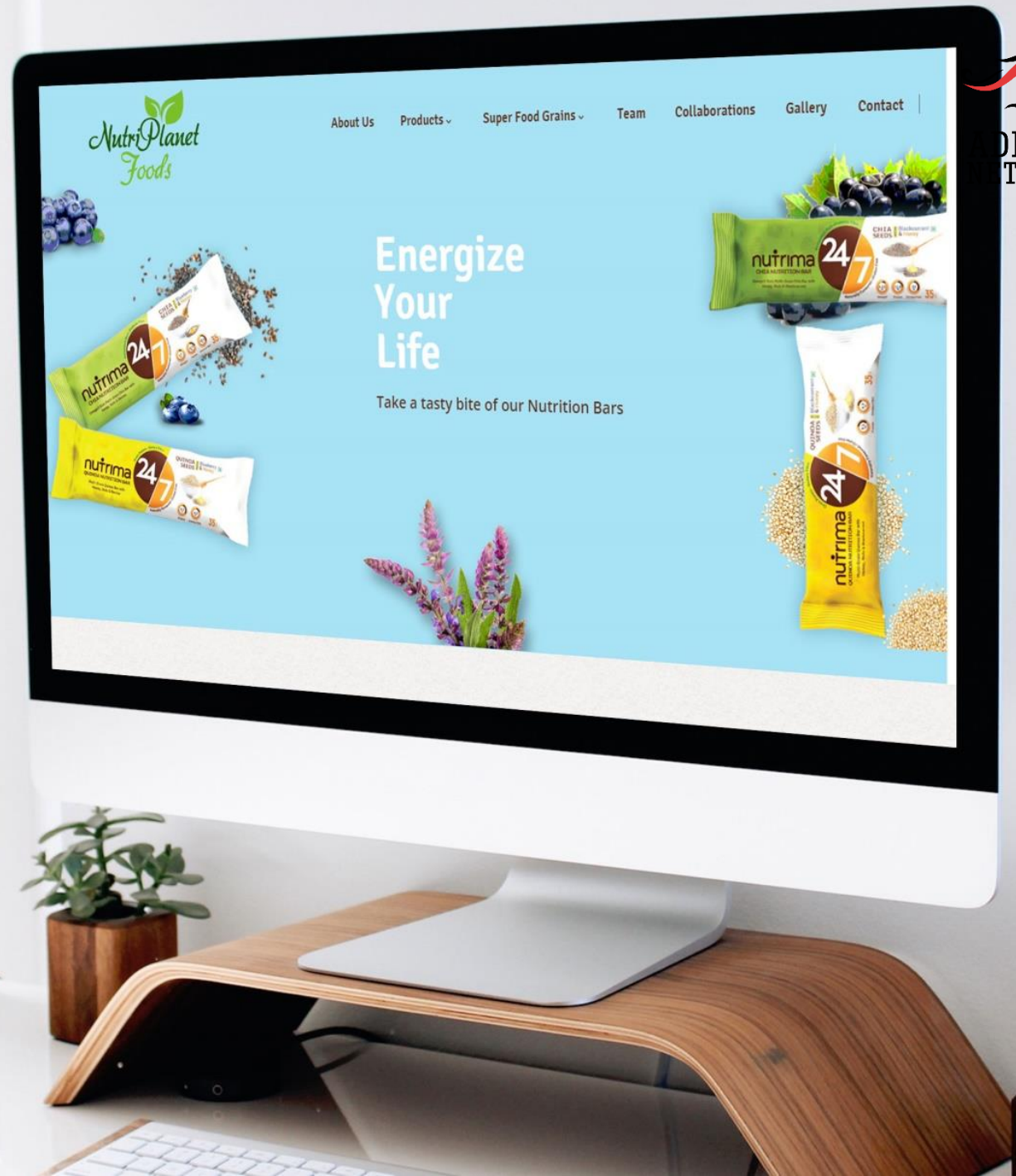
# ADDPRO SHOWCASE UI/UX



# ADDPRO SHOWCASE UI/UX



# ADDPRO SHOWCASE UI/UX





# ADDPRO SHOWCASE UI/UX



SPHOORTI Precision Assured STORE

TOOL DISCS TOOL HOLDERS DRIVEN TOOL HOLDERS REDUCTION SLEEVES

LOGIN REGISTER

Slotted Tool Holders BUY NOW

Category All

AXIAL Tool Holder (ATH)

Select Variants

Boring Tool Holder (BTH)

Select Variants

Slotted Tool Disc

Select Variants

ONLINE STORE ASSISTANT

PAYMENT MODES

ORDER STATUS

SPHOORTI Precision Assured

Policy | Terms & Condition | Disclaimer

© 2017 All rights reserved

SPHOORTI Precision Assured STORE

TOOL DISCS TOOL HOLDERS DRIVEN TOOL HOLDERS REDUCTION SLEEVES

LOGIN REGISTER

Slotted Tool Holders BUY NOW

Back to Tool Holders

Boring Tool Holder (BTH)

Features

- Highest Tensile Strength of 88kgf/cm<sup>2</sup> and better impact properties.
- Finish machined on 16 Precision machining centers.
- Interchangeable tool holder. No need for on-line boring on machine.
- Through-Coolant Boring Tool Holders also available.
- Suitable sleeves can be used in BTH for different tool sizes.
- Each series boring tool holders are also available upon request.

Code	A	DB	C	E	F	G	H	EX-STOCK	DOWNLOAD REF	PRICE
BTH 12-20 CH 18	12	20	18	12	58	35	43	4	AVL 100	₹ 280
BTH 16-20 CH 18	16	20	18	16	66	40	51	5	AVL 100	₹ 280
BTH 16-25 CH 18	16	25	18	16	66	40	51	5	AVL 100	₹ 280
BTH 16-25 CH 32	16	25	32	16	66	40	51	5	AVL 000	₹ 280
BTH 20-20 CH 18	20	20	18	16	76	42.5	60	5	AVL 100	₹ 280
BTH 20-25 CH 18	20	25	18	16	76	42.5	60	5	AVL 100	₹ 280
BTH 20-32 CH 18	20	32	18	16	76	42.5	60	5	AVL 100	₹ 280
BTH 20-20 CH 25	20	20	25	16	76	57	60	5	AVL 100	₹ 280
BTH 20-25 CH 25	20	25	25	16	76	57	60	5	AVL 100	₹ 280
BTH 20-32 CH 25	20	32	25	16	76	57	60	5	AVL 000	₹ 280
BTH 20-32 CH 30	20	32	30	16	76	63	60	5	AVL 000	₹ 280
BTH 20-40 CH 30	20	40	30	16	76	63	60	5	AVL 100	₹ 280
BTH 20-32 CH 35	20	32	35	16	76	63	60	5	AVL 100	₹ 280
BTH 25-20 CH 30 L60	25	20	30	25	90	63	60	5	AVL 100	₹ 280
BTH 25-25 CH 30 L60	25	25	30	25	90	63	60	5	AVL 100	₹ 280

Ex Stock Delivery - dispatch in 2 Working days  
Delivery Time Frame - dispatch in 2 Weeks

ONLINE STORE ASSISTANT

PAYMENT MODES

ORDER STATUS

SPHOORTI Precision Assured

© 2017 All rights reserved

Policy | Terms & Condition | Disclaimer

SPHOORTI Precision Assured STORE

TOOL DISCS TOOL HOLDERS DRIVEN TOOL HOLDERS REDUCTION SLEEVES

LOGIN REGISTER

Boring Tool Holder (BTH)

Description	Quantity	Unit price	Cost
BTH 12-20 CH 18	10	₹280	₹2,800
A:12 DB:20			
C:18 D:12			
E:56 F:35			
G:43 H:4			
TC: YES TOOL DISC TYPE TO 50-8-12			

Expected Delivery Time: 2 Working Days

Shipping cost may vary based on consignment size and location

ADD MORE TO CART PROCEED TO CHECKOUT

SPHOORTI Precision Assured STORE

TOOL DISCS TOOL HOLDERS DRIVEN TOOL HOLDERS REDUCTION SLEEVES

LOGIN REGISTER

Login to Proceed

Username/Email Password

Remember me

LOGIN TO PROCEED

Company Name Address Line 1

Contact Person Address Line 2

Mobile City State

Email GST No.

Register

# ADDPRO SHOWCASE UI/UX



ADDPRO SHOWCASE

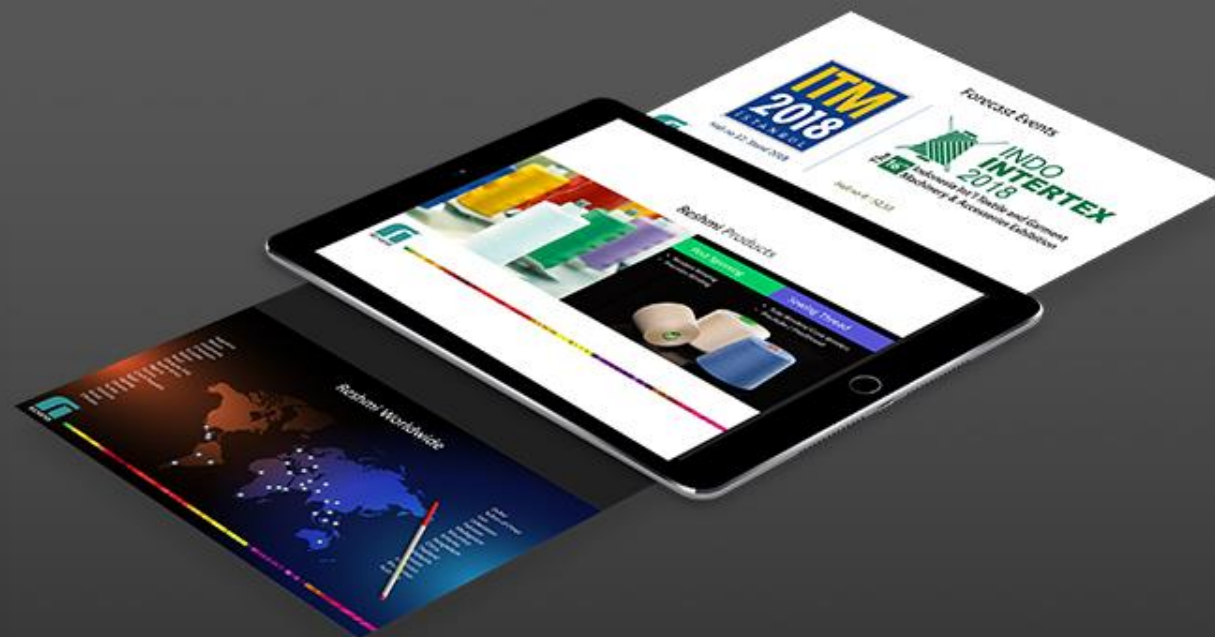
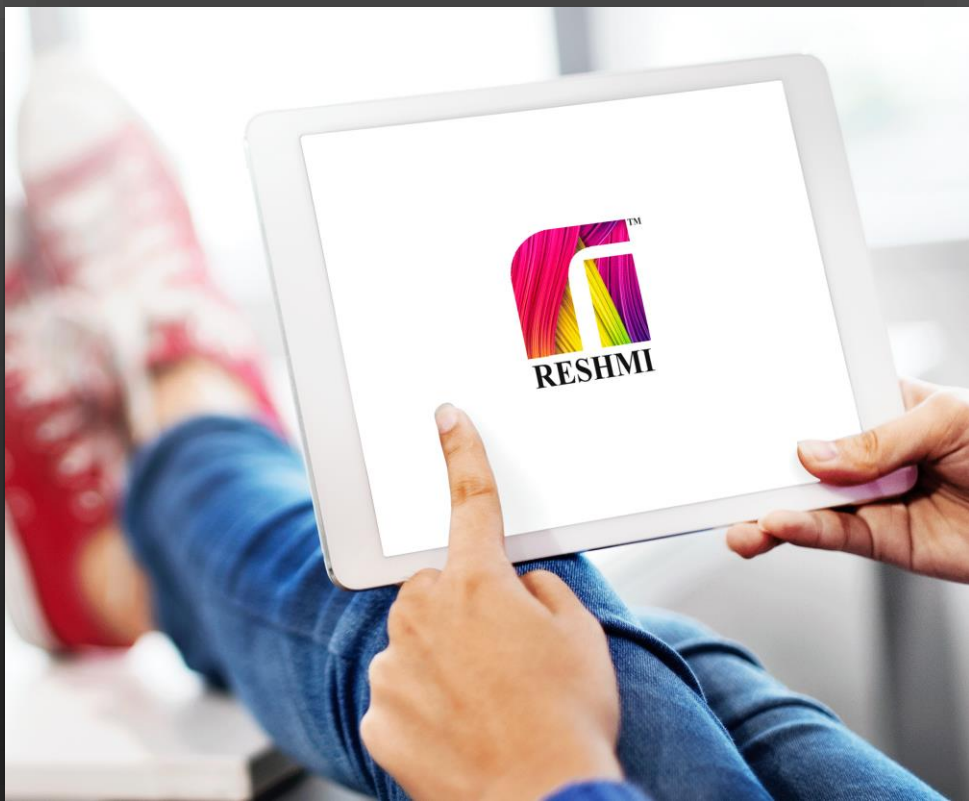


ADDPRO  
NETWORK

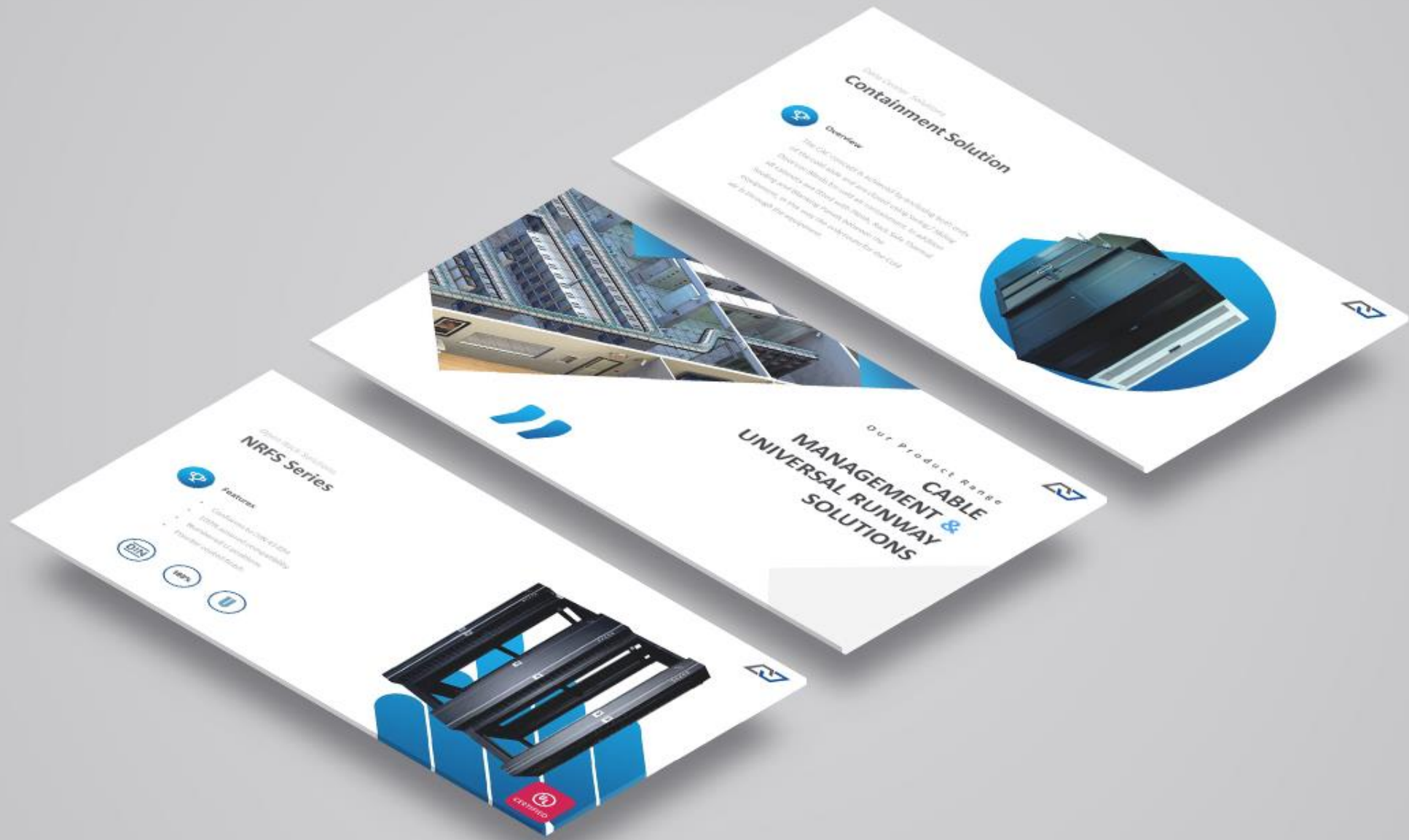
# CORPORATE PRESENTATION



# ADDPRO SHOWCASE CORPORATE PRESENTATION



# ADDPRO SHOWCASE CORPORATE PRESENTATION



# ADDPRO SHOWCASE CORPORATE PRESENTATION





# ADDPRO SHOWCASE CORPORATE PRESENTATION



ADDPRO SHOWCASE



# CORPORATE FILM

# ADDPRO SHOWCASE CORPORATE FILM





# ADDPRO SHOWCASE CORPORATE FILM





ADDPRO SHOWCASE CORPORATE FILM



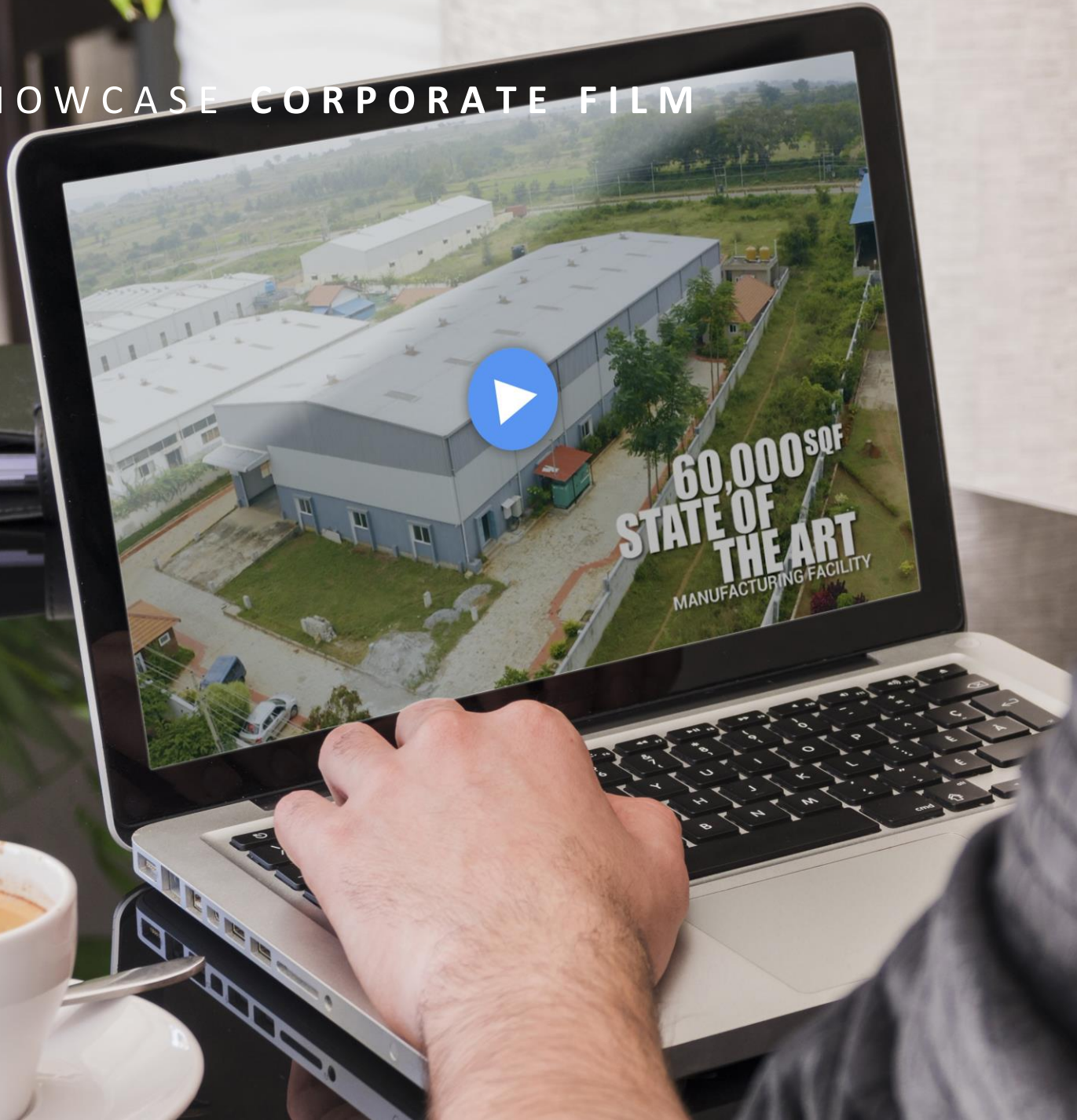


# ADDPRO SHOWCASE CORPORATE FILM





ADDPRO SHOWCASE CORPORATE FILM



ADDPRO SHOWCASE



# PRODUCT EXPLAINERS





# ADDPRO SHOWCASE PRODUCT EXPLAINERS



**Introducing Effective Air flow Management Solutions**

3:02

This video thumbnail shows a man in a dark suit sitting at a desk with a laptop. The text "Introducing Effective Air flow Management Solutions" is displayed in blue and white, with a duration of 3:02 in a black box at the bottom right.

**Introducing iRACK**

to achieve efficiency via modular dc

2:11

This video thumbnail shows a man in a grey suit standing next to a server rack. The text "Introducing iRACK" is in large blue letters, followed by "to achieve efficiency via modular dc" in smaller black text. The duration 2:11 is in a black box at the bottom right.

**Introduction to Co-location Rack**

1:32

This video thumbnail shows a man in a dark suit standing in front of a server rack. The text "Introduction to Co-location Rack" is in blue and white, with a duration of 1:32 in a black box at the bottom right.

**Introducing Panel Mount AC**

1:28

This video thumbnail shows a man in a white shirt standing next to a server rack. The text "Introducing Panel Mount AC" is in blue and white, with a duration of 1:28 in a black box at the bottom right.

**Introducing NRSe**

to overcome Thermal & Cable management issues in high Density applications

2:39

This video thumbnail shows a man in a dark suit standing next to a server rack. The text "Introducing NRSe" is in large blue letters, followed by "to overcome Thermal & Cable management issues in high Density applications" in smaller black text. The duration 2:39 is in a black box at the bottom right.

Reach us For more info on iRack Block

+91-6366375522 / +

0:36

This video thumbnail features a white server rack with green doors. The text "Reach us For more info on iRack Block" is on the left, and the phone number "+91-6366375522 / +" is below it. The duration 0:36 is in a black box at the bottom right.

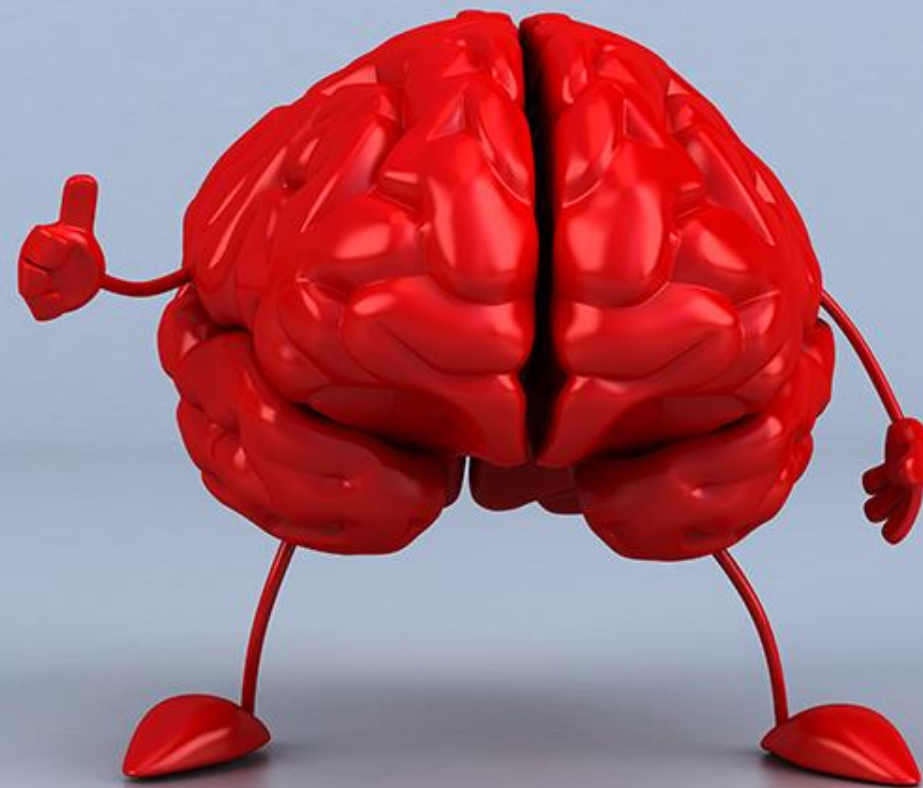


ADDPRO SHOWCASE

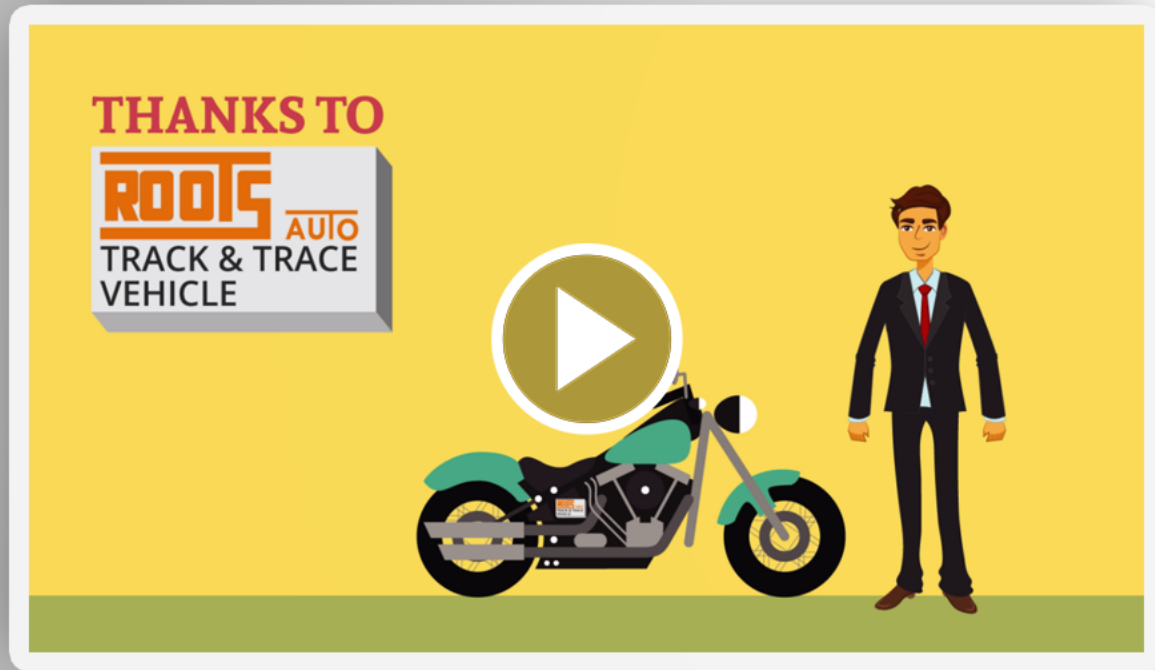


ADDPRO  
NETWORK

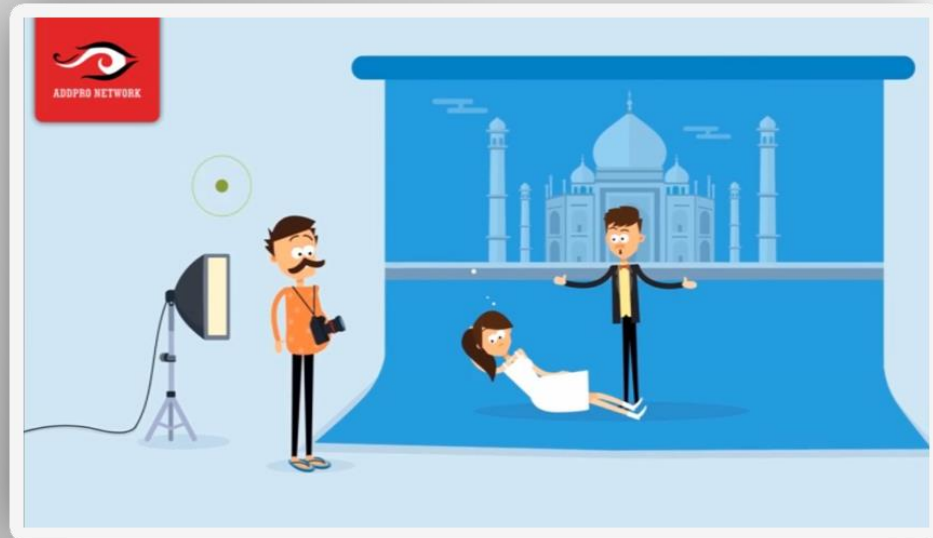
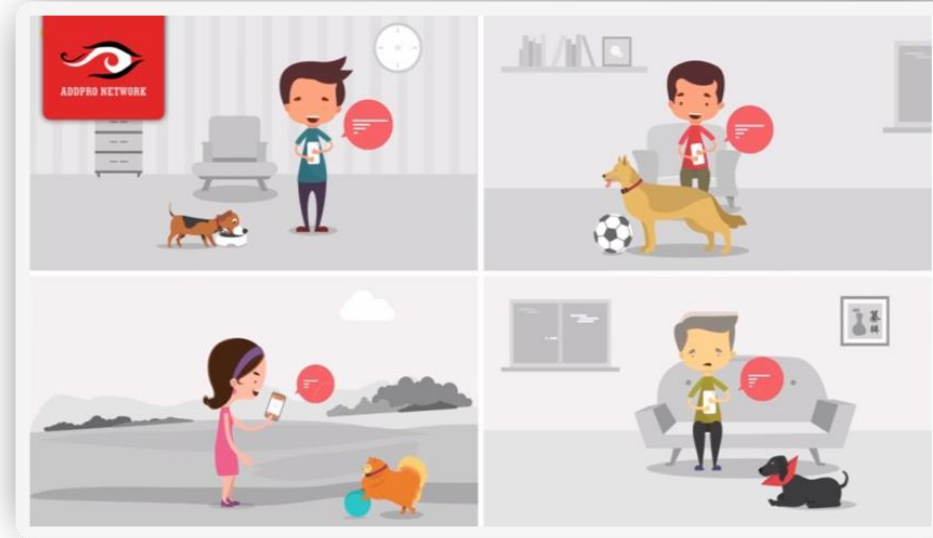
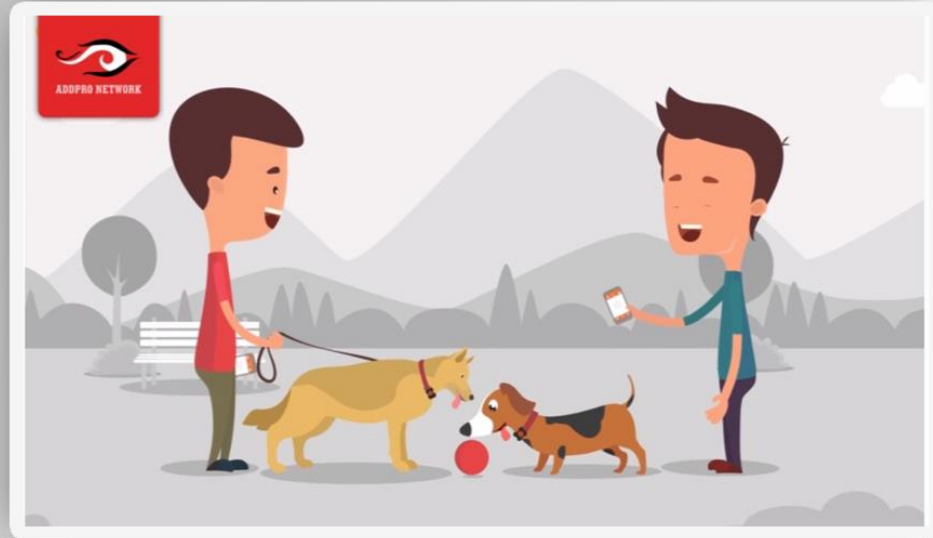
# ANIMATED VIDEO



# ADDPRO SHOWCASE ANIMATED VIDEO



# ADDPRO SHOWCASE ANIMATED VIDEO





ADDPRO SHOWCASE



# BRAND MANUAL



## Logo Visuals SECTION 01

The DotSpace logo is in Line and Xor black on a white background. Only use solid black or white versions when color is not an option. The blue logo is our most universally recognized asset, and to aid comprehension, we use that version wherever possible. The correct logo has a lowercase "tm".

### LOGO QUALIFICATIONS AND REQUIREMENTS

To qualify for use of any of these logos, you must meet the requirements of the appropriate logo program for each product you use the logo on. For more info on those requirements.

### LOGO DOTSPACE OVERVIEW

In all new productions and printings of your products, DotSpace licensing logos are intended for use on a product and/or marketing materials must be in a variety of applications. For more info on those requirements.

DOTSPACE

## BRAND GUIDELINES

TOOLS TO HELP YOU USE OUR CORPORATE IDENTITY EFFECTIVELY

WEB  
INFO@DOTSPACE.COM  
WWW.DOTSPACECOMPANY.COM

TELEPHONE & FAX  
+1 (0) 40 358 897 2512  
+1 (0) 40 389 841 4814

CONTACT US  
ADDRESS  
STREET, REGION, COUNTRY  
PO BOX 321

### Primary Logotype

The first way we signify the presence of DotSpace is with our Primary Logotype. It's the clearest way we can identify our company visually. We should be signing off all of our communications with the logotype: our partner, mesaDotSpaces.

#### CLEARSPACE

In order to preserve the integrity of the Primary Logotype, it is important that no other logos, type or other graphic elements infringe on its space. The minimum clearspace around the logotype is equivalent to 1/3 of the width of the logotype.

#### SMALLEST-SIZE USE

The minimum size the Primary Logotype may be used for print applications is .4" (10mm) wide. For digital applications, the minimum size is 45 pixels wide.

#### LOGOTYPE ARTWORK

Do not attempt to redraw or recreate any element of the logotype. Use the approved digital files of the artwork.

DOTSPACE | BRAND MANUAL - 2017/2018



PRIMARY BLACK LOGOTYPE



PRIMARY WHITE LOGOTYPE

#### LOGO MINIMUM SIZE

In order to preserve the integrity of the Primary Logotype, it is important that no other logos, type or other graphic elements infringe on its space. The minimum clearspace around the logotype is equivalent to 1/3 of the width of the logotype.

#### ICON SIZE USE

The minimum size for icons used in our communications should be used as follows:

# ADDPRO SHOWCASE BRAND MANUAL



# ADDPRO SHOWCASE BRAND MANUAL





ADDPRO SHOWCASE



ADDPRO  
NETWORK



# GRAPHIC DESIGN







# ADDPRO SHOWCASE GRAPHIC DESIGN



Deliberate Concern  
**UROMED (INDIA)**



Urology  
Gastroenterology  
Gynaecology  
Interventional Radiology  
Nephrology

**Manish Medi  
Innovation**  
AN ISO 9001 & 13485 CERTIFIED COMPANY

The cover features a white background with a blue geometric design of triangles. On the right, several medical instruments (catheters) are displayed vertically. The text is arranged in a clean, professional layout.

## About us

Manishmedi innovation has been stationed at a total of 30000 sq.ft. There are 4 dedicated world-class manufacturing facilities to produce international medical devices and the production capacity accounts for 1 million units per month. With good growth track record, our products reach more than 45 countries across the globe & have good distribution chain across India.

- 2004** Started with 6 products with a monthly capacity of 8000 units
- 2007** Manufactured 19 products
- 2009** Manufactured 31 products with the volume of 70000 units per annum
- 2011** Manufactured 52 Products with a capacity of 18000 uni. + per month
- 2013** Manufactured 74 products with the capacity of 42000 units per month
- 2015** Manufactured 94 products and achieved a production capacity of over 60000 units per month
- 2018** Expanded the infrastructure with two more production line over 30000 sq.ft

## Our Milestones





# ADDPRO SHOWCASE GRAPHIC DESIGN

Two overlapping brochures for Malco Technologies are shown on a grey concrete background. The top brochure is titled "INFRASTRUCTURE SOLUTION" and features a circular image of a server room with a security camera. The bottom brochure is titled "INSPIRED BY VALUES DRIVEN BY TECHNOLOGY" and features a similar server room image. Both brochures include the Malco Technologies logo and various text elements.

**malco**  
Malco Technologies  
*initial investments*

## INFRASTRUCTURE SOLUTION

Malco Technologies believe in providing companies with infrastructure solutions that focus and cater to customers' requirements. With our specialized team of technology experts and wealth of industry knowledge from multiple business sectors, we work with our clients to ensure that they get the best choice of infrastructure and address requirements.

Infrastructure is all around and is the foundation on which modern businesses are built. The right infrastructure is crucial and ensures that the firm is at its most productive - maximizing efficiency and minimizing costs and risks. The type of infrastructure that is best for each business depends on a variety of factors, there is no "one size fits all".

**INSPIRED BY VALUES DRIVEN BY TECHNOLOGY**

INFRASTRUCTURE SOLUTION

SMART INFRASTRUCTURE

COMPLETE SECURITY

ENERGY & POWER

[www.malcotechnology.com](http://www.malcotechnology.com)

**malco**  
Malco Technologies  
*initial investments*

WE HELP YOU BUILD THE MOST EFFICIENT AND ROBUST IT INFRASTRUCTURE



# ADDPRO SHOWCASE GRAPHIC DESIGN





# ADDPRO SHOWCASE GRAPHIC DESIGN



# GRACE OF GOD

**PRODUCT EXCELLENCE**



Providing  
Turnkey  
Solutions for  
Bakery Industries



Quick and Efficient  
After sales Service



ARUN LASER

*FAST GROWTH*  
Over  
**300%**  
in the last  
7 years



**STRONG**  
INFRASTRUCTURE



Sophisticated  
precision  
equipment



# ADDPRO SHOWCASE GRAPHIC DESIGN



# ADDPRO SHOWCASE GRAPHIC DESIGN





ADDPRO SHOWCASE

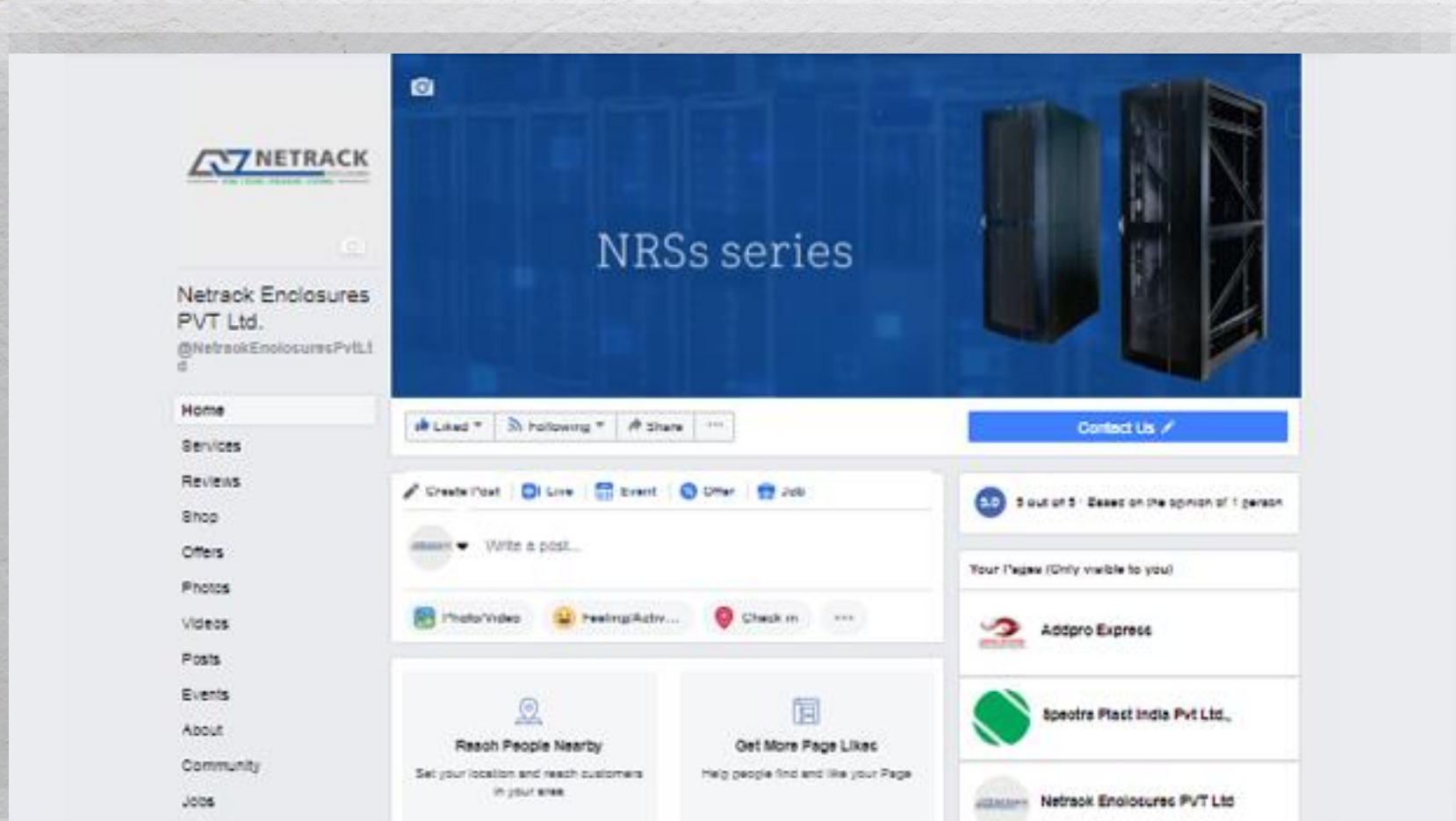


# SOCIAL MEDIA





# ADDPRO SHOWCASE SOCIAL MEDIA





# ADDPRO SHOWCASE SOCIAL MEDIA



**ULTRA-RIGID RACKS FOR HIGH DENSITY APPLICATION SPECIALLY DESIGNED FOR SEISMIC ZONE.**

**SEISMIC RATED**

**NETRACK ENCLOSURES**  
STORE | SECURE | STREAMLINE | SYSTEMISE

**NETRACK ENCLOSURES**  
STORE | SECURE | STREAMLINE | SYSTEMISE

Containment Solution for **DCG**

Eliminates hot and cold air mixing

FOR MORE INFO LOGON TO [www.netrackindia.com](http://www.netrackindia.com)



**NETRACK ENCLOSURES**  
STORE | SECURE | STREAMLINE | SYSTEMISE

**IS YOUR SERVER NOISE ANNOYING YOU?**

[www.netrackindia.com](http://www.netrackindia.com)

**NETRACK ENCLOSURES**  
STORE | SECURE | STREAMLINE | SYSTEMISE

FOR MORE INFO LOGON TO [www.netrackindia.com](http://www.netrackindia.com)

**NETRACK ENCLOSURES**  
STORE | SECURE | STREAMLINE | SYSTEMISE

**NRFS**  
4 Post Series

UL CERTIFIED

An ISO 9001:2008 certified product satisfying quality compliances



# ADDPRO SHOWCASE SOCIAL MEDIA

A screenshot of the LMW CNC Facebook page. The page layout includes a left-hand navigation menu, a main content area with a featured post, and a right-hand sidebar with community and about information.

**LMW CNC**  
@lmwncnc

Home  
Posts  
Videos  
Photos  
About  
Community  
Events  
Info and Ads  
[Create a Page](#)

## Integrated Solutions!

ALROSPRINT DEFENCE AUTOMOBILE OIL & GAS  
MEDICAL AGRIC & EARTH MOVERS  
PUMPS & VALVE DIE & MOULD GENERAL ENGINEERING

INDIA'S FINEST RANGE OF CNC MACHINES  
www.lmwncnc.com

TURNING  
MILLING  
TURNMILL

Like Follow Share ... [Contact Us](#) [Send Message](#)

Create Post

Write a post...

Tag Friends Check in ...

### Community

See All

Invite your friends to like this Page

39,589 people like this

39,723 people follow this

### About

See All

0422 3021300

Send Message

lmwmtdevents.com

Industrial Company

Suggest Edits

### Posts

**LMW CNC** 20 hrs · 🌐 · 📍

JV 80 VERTICAL MACHINING CENTER  
Solution For Larger Components

FEATURES





# ADDPRO SHOWCASE SOCIAL MEDIA



ADDPRO  
NETWORK



**JHM 40**  
HORIZONTAL MACHINING CENTER

TURNING  
MILLING  
TURNMILL  
INTEGRATED SOLUTIONS

AEROSPACE DEFENCE  
AUTOMOBILE OIL & GAS  
MEDICAL AGRIC & EARTH MOVERS  
PUMPS & VALVE DIE & MOULD  
GENERAL ENGINEERING  
INDIA'S FINEST  
RANGE OF CNC MACHINES  
[www.lmwcnc.com](http://www.lmwcnc.com)




**LL20MY L5**  
TURNMILL CENTER

TURNING  
MILLING  
TURNMILL  
INTEGRATED SOLUTIONS

AEROSPACE DEFENCE  
AUTOMOBILE OIL & GAS  
MEDICAL AGRIC & EARTH MOVERS  
PUMPS & VALVE DIE & MOULD  
GENERAL ENGINEERING  
INDIA'S FINEST  
RANGE OF CNC MACHINES  
[www.lmwcnc.com](http://www.lmwcnc.com)







Happy Dussehra



TURNING  
MILLING  
TURNMILL  
INTEGRATED SOLUTIONS

AEROSPACE DEFENCE  
AUTOMOBILE OIL & GAS  
MEDICAL AGRIC & EARTH MOVERS  
PUMPS & VALVE DIE & MOULD  
GENERAL ENGINEERING  
INDIA'S FINEST  
RANGE OF CNC MACHINES  
[www.lmwcnc.com](http://www.lmwcnc.com)

FOLLOW US ON:  
  





# ADDPRO SHOWCASE SOCIAL MEDIA



**TITAN eyeplus**  
@HSR LAYOUT

Titan Eye Plus HSR Layout  
@TitanEyePlusHSRLayout

Home  
Posts  
Reviews  
Photos  
Groups  
Community  
Videos  
About

Create a Page

WALKOUT WITH STYLE

TITAN eyeplus

Now @ HSR Layout Near BDA Complex

Like Follow Recommend ... Call Now Send Message

Status Photo/Video

Write something on this Page...

4.3 Open Now

Sunglasses & Eyewear Store in Bangalore, India

Community See All

Invite your friends to like this Page

690 people like this

691 people follow this

Visit the group for this Page, Titan Eye Plus HSR Layout group.

About See All

Posts

**Titan Eye Plus HSR Layout**  
November 30, 2017 · 🌐

Contact Us: 080-48148056  
#Hsrlayout #Bangalore #Shopopening #Explore #Fresh





# ADDPRO SHOWCASE SOCIAL MEDIA



Find your style  
At our store

Upto **40% OFF**  
On Select Brands  
Offer valid till 31st August 2017

TITAN eyeplus

#2,  
R.T.Nagar main road

080 2333 3237

BACK TO ROUTE

\* Terms & Conditions applicable

See,

20% OFF

TITAN eyeplus near BDA Complex HSR Layout

fastrack SUNGLASSES

RAID US UP TO 50% OFF

BEING ILLEGALLY COOL

TITAN eyeplus near BDA Complex HSR Layout

EYE COLOR THAT REFLECTS YOUR PERSONALITY

COLORED CONTACT LENSES FROM BAUSCH + LOMB

See better. Live better.

EXCLUSIVELY AT TITAN eye+

NEAR BDA COMPLEX HSR LAYOUT

TITAN eyeplus

UP TO 40% OFF

TITAN SUNGLASSES

WALKIN RT NAGAR STORE

080 2333 3237

\* Terms & Conditions Apply

SCAN FOR ROUTE

GET YOUR WORK LOOK

WALKIN RT NAGAR

SCAN FOR ROUTE

TITAN eyeplus

TITAN eyeplus



# ADDPRO SHOWCASE SOCIAL MEDIA



C&C CLASSIC POLO SIGNATURE

Classic Polo  
@ClassicPolo

Home  
Posts  
Reviews  
Photos  
Shop  
Offers  
Locations  
Community  
Videos  
Events  
About  
Instagram feed  
Twitter

CLASSICPOLOS.com  
THE GREAT CLEARANCE  
\*SALE\*  
UPTO  
50% OFF  
SHOP NOW

STAY /KLASIK/

Like Follow Share ... Shop Now Send Message

Posts

Classic Polo  
20 hrs · 🌐

Classic Polo Brings handpicked, on-trend styles from across India & the world to your wardrobe. Go ahead and express your personal style with #classicPolo, #SwissClub #CPBRO Upto 50% OFF\* Shop Now.  
<https://goo.gl/J1taL3>

IT DOESN'T GET ANY BETTER!  
UPTO 50% OFF

Clothing (Brand)  
4.8 ★★★★★

Community See All

Invite your friends to like this Page  
315,408 people like this  
315,113 people follow this

About See All

093633 93633  
Typically replies within a few hours  
Send Message





# ADDPRO SHOWCASE SOCIAL MEDIA





# ADDPRO SHOWCASE SOCIAL MEDIA



A screenshot of the Facebook page for FIVE STAR Chicken India. The page features a cover photo of a red bucket of fried chicken with the text "It's not just any FRIED CHICKEN". The left sidebar includes navigation links like Home, About, Photos, Reviews, Videos, Store Locator, Survey, Posts, Community, Twitter, and Welcome, along with a "Create a Page" button. The main content area shows a status update field, a "Photos" section with a Christmas-themed image, and a "Community" section with statistics and a list of users who liked or followed the page. The "About" section is partially visible at the bottom.





# ADDPRO SHOWCASE SOCIAL MEDIA





# ADDPRO SHOWCASE SOCIAL MEDIA



Brindavan College of Engineering

**CAMPUS PLACEMENTS**

OUR ALUMNI ARE PLACED AT TOP COMPANIES IN INDUSTRY

ADMISSIONS OPEN 2020 - 2021

Brindavan College of Engineering

**THE TRUE ARCHITECTS ARE ELEVATED HERE**

Bachelor of Architecture  
BE Civil Engineering  
M.Tech Civil Structural Engineering  
Diploma Civil

ADMISSIONS OPEN 2020 - 2021

Brindavan Group of Institution

**with global presence**

ADMISSIONS OPEN 2020 - 2021

Brindavan College of Engineering

**this wheel was engineered**

now its your turn to be an engineer

ADMISSIONS OPEN 2020 - 2021



**Brindavan Group of Institutions**

Brindavan Group of Institution

**48+ NATIONALS LOCALIZED AS ONE**

Brindavan your step towards global education

ADMISSIONS OPEN 2020 - 2021



# ADDPRO SHOWCASE SOCIAL MEDIA



REGIONAL COLLEGE OF MANAGEMENT  
BANGALORE

## WORKSHOP

Innovation & Purpose of Business

2 module sessions with intermittent assignment for participants

**1<sup>st</sup>** Session  
Time: 3pm,  
Date: 28th April, 2020

by Dr. Emst Kimakowitz  
Switzerland

www.rcmb.in | +91-9538902136



REGIONAL COLLEGE OF MANAGEMENT  
BANGALORE

## CORONA ADVANTAGE

INDIA OFFERS LANDS, TWICE THE SIZE OF "LUXEMBOURG" TO FIRMS LEAVING CHINA

THE ECONOMIC TIMES

www.rcmb.in | +91-9538902136



REGIONAL COLLEGE OF MANAGEMENT  
BANGALORE

100% PLACEMENT RECORD SINCE INCEPTION

## MULTIPLE JOB OFFERS

ADMISSIONS OPEN

AVERAGE SALARY  
**₹7.2 LAKH**

www.rcmb.in  
+91-9538902136



REGIONAL COLLEGE OF MANAGEMENT  
BANGALORE

## NEW BEGINNING ENDLESS POSSIBILITIES



We make students ready for the Global Market. Start your beginning with RCMB

www.rcmb.in | +91-9538902136



REGIONAL COLLEGE OF MANAGEMENT  
BANGALORE

## PANDEMIC CAN'T STOP YOU!

India is going to be the place of immense opportunities



Follow your goal  
Admissions Open 2020-21

www.rcmb.in | +91-9538902136



ADDPRO CASE STUDY



# A LOOK BACK





# CASE STUDY

**NETRACK ENCLOSURES**  
STORE | SECURE | STREAMLINE | SYSTEMISE

Intelligent Racks & Cooling Solutions

Intelligent Rack Access Controller, designed and manufactured with highest quality standards to Control & Manage front & Back door of Rack / Enclosures. The system is reliable easy to install with minimum support and can be installed in New Racks and Retrofitted on Existing Racks.

Know more

Rack Power & Electronics

PDU with inbuilt reliable Circuit board with digital display and can be programmed to show Current, Voltage or Power or roll over on PDU level. This PDU is designed to bridge gap between conventional and intelligent PDU where in User map the load on the PDU and avoid over loading and MCB Tripping.

Know more

Case

- Data Center Solution Infrastructure**  
Lorem ipsum dolor sit amet, consectetur adipiscing elit. Vivamus luctus sit amet massa vel ultrices.
- Rack Power Solution Alternative energy**  
Nullam iaculis vitae ante nec sollicitudin. Cras ante lorem, hendrerit vitae erat id, luctus sollicitudin nibh.
- Open Rack Solution IT Solutions**  
Quisque consectetur magna egestas odio porta, in hendrerit risus scelerisque. Nullam egestas est vel bibendum aliquet.

## Client's Requisite

Netrack, a leading manufacturer of networking rack products for servers and data Centers were looking for a digital branding partner to enhance their business in India and abroad.

## Our Solution

Addpro Network comprehended their requisite and crafted a comprehensive design which projected a great User interface design showcasing various product description and specification. We also provided excellent service in online branding such as Search engine marketing, Social Media Marketing, B2B marketing, which improved their visibility and increased the traffic and generated business leads across the globe.

## Before Addpro:

Result Obtained: The visibility was only 1200 visitors per year.



Visitors



35,000

Growth



90%

Leads



400

Reach



Pan India  
UK  
Dubai

# CASE STUDY

*Enhanced with Innovation **Krafted** to Perfection*



Quality + Productivity

Time & Cost

Launching the all new **JV Kraft**

[click here for more info](#)

**The next generation VMC  
With a new column structure**

JV Kraft, the most advanced and comprehensive VMC, is yet another innovation & value creation product from LMW, the brand leader in manufacturing customized products. It's thoughtfully crafted to cover different needs of customers in a single solution and comes with LMW's legendary commitment to quality and best value for investment.

- ▶ Precision, perfection, versatility and reliability – all rolled into one
- ▶ Designed to enhance manufacturing efficiency with high accuracy and productivity
- ▶ The new column structure offers more advantage in machining modern day components

LAKSHMI MACHINE WORKS LIMITED  
Machine Tool Division, Arasur, Coimbatore - 641 407, India  
Phone: 0422 3028129, 3028130 | Email: mtd\_mcenter@lmw.co.in

## Client's Requisite

LMW, a global player and a leading manufacturers in Textile Spinning Machinery looked for a digital partner to augment their lead generating through effective digital campaigns.

## Our Solution

Addpro Network implemented enhanced digital strategy through effective email campaign which yielded tremendous growth across India.

## Before Addpro:

Result Obtained: The visibility was only 5000.



Visitors



46,000

Growth



100%

Leads



120

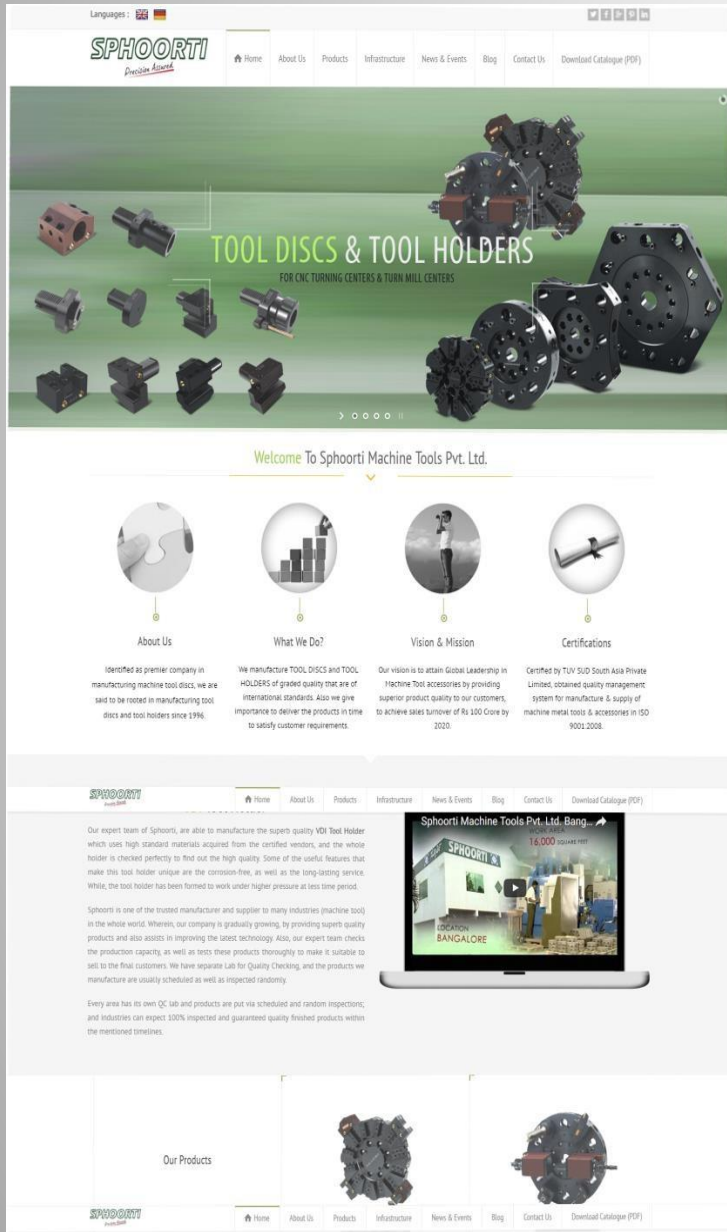
Reach



Pan India



# CASE STUDY



## Client's Requisite

Spoorthi, a premier company in the manufacturing of machine tool disc with an aim to attain global leadership in machine tool accessories looked for a creative design partner who would invariably provide a great platform for the visitor with a great digital user experience.

## Our Solution

Addpro Network identified and enumerated every detail and created a design which imbibed effective features to provide a delightful experience to the user. By constantly emphasizing the key factors through effective Search engine marketing, social media marketing and B2B marketing, it helped to generate more leads and improvised their business in India and Germany.

## Before Addpro:

Result Obtained: The visibility was only 1000 visitors per year.



Visitors



7,000

Growth



85%

Leads



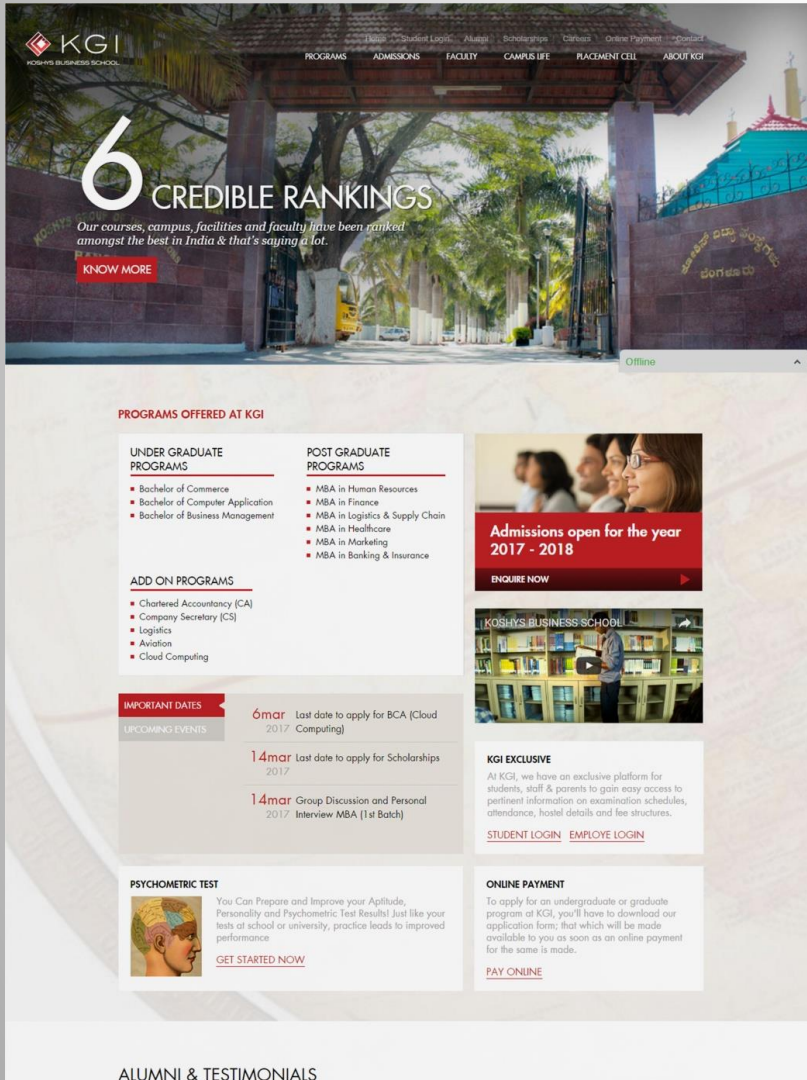
240

Reach



India | USA  
Russia | France  
Germany

# CASE STUDY



## Client's Requisite

Koshys Group of institution (KGI) is a premier institute for Management and Nursing Education in Bangalore. The institution wanted to enhance the lead generation for admission across India and hence looked for a digital partner to achieve their objectives..

## Our Solution

Addpro Network, after analyzing on their perspective, provided a complete solution for digital and creative strategy. The well-defined strategy resulted in a platform with a great digital user experience and through effective online promotions such as Google Adwords, social media marketing; it helped to reach out more students and generated leads across India

## Before Addpro:

Result Obtained: The visibility was only 2000 visitors per year.



Visitors



46,000

Growth



100%

Leads



120

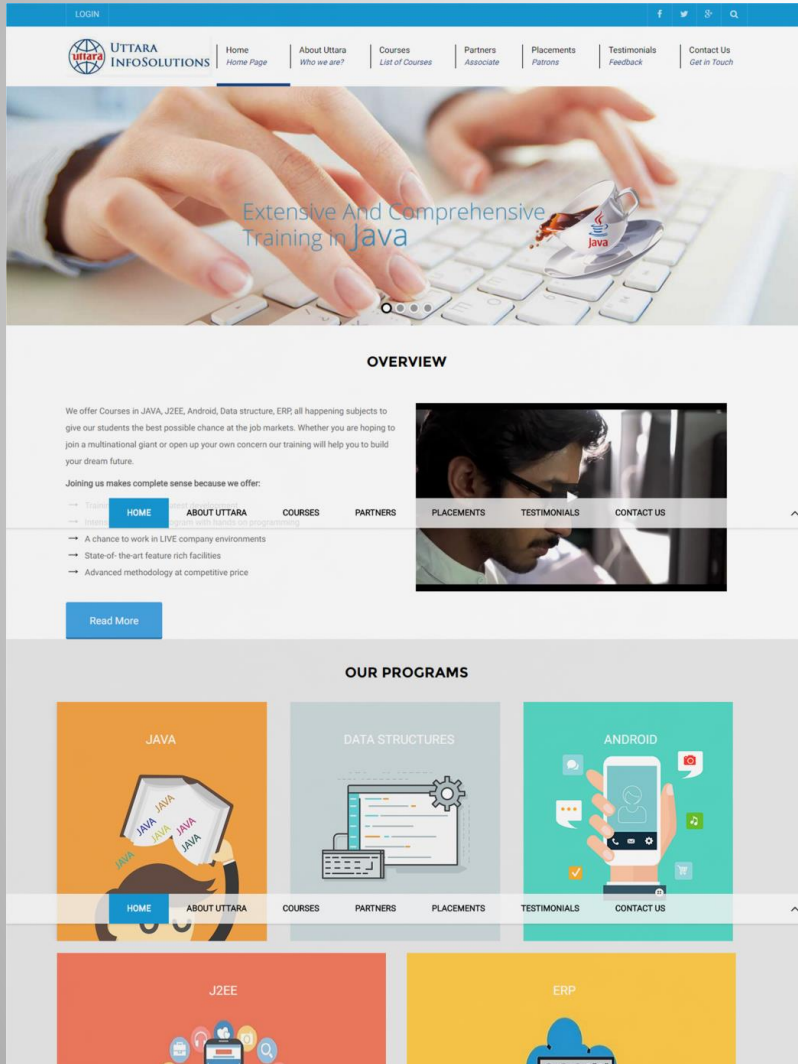
Reach



India



# CASE STUDY



## Client's Requisite

Uttara Info Solution, a leading software training institute in Bangalore with an aim to promote their enhanced training methodology looked for digital marketing design partner to exhibit their expertise through creative design and effective brand strategy.

## Our Solution

Addpro Network meticulously worked on every requirement of Uttara info solution and implemented the ideas to provide a great user interface. The responsive design along with effective Search engine marketing, social media marketing, Google Adwords helped to achieve a tremendous response from candidates across Karnataka and enhanced their lead generation tenfold.

## Before Addpro:

Result Obtained: The visibility was only 1200 visitors per year.



Visitors



51,000

Growth



85%

Leads



1200

Reach



India

ADDPRO CASE STUDY



# PRODUCT PHOTOSHOOT





ADDPRO PHOTOSHOOT



# ADDPRO PHOTOSHOOT



ADDPRO  
NETWORK



 **NETRACK**  
ENCLOSURES

STORE | SECURE | STREAMLINE | SYSTEMISE



# ADDPRO PHOTOSHOOT



ADDPRO  
NETWORK



  
**simta**  
MACHINERIES FOR PRECISION

ADDPRO PHOTOSHOOT





# ADDPRO CLIENT SPEAK



## LMW

We have been associated with Addpro for a considerable amount of time and their dedication in accomplishing high web marketing goals is unmatched. We look forward to a continued long-term relationship with them.

**Mr. Gowrishankar**  
*Managing Director*



## Netrack Enclosures Pvt. Ltd

A highly impressive and promising team of developers, strategists and testers. AddPro Network, you have delivered with great efficiency, your hard work and dedication will always keep you our most preferred association in the coming future.

**Mr. Raviraj**  
*Director*

# ADDPRO CLIENT SPEAK



## Trident

Really impressed with their quick understanding of our company and ability to produce original, clever and meaningful social media posts every week. They are brilliant at transforming our ideas into a great website. And, we are excited to work with them again and again.

Name Surname  
*Designation*

---



## Shell

We had a fantastic experience working with Addpro to produce our corporate video. They had taken the time beforehand to understand what we were trying to portray and the end result is just what we wanted – bright and colourful corporate video. We'd highly recommend!

Name Surname  
*Designation*



# ADDPRO CLIENT SPEAK



## Arun

Addpro designed our print designs and did an amazing job. They exceeded our expectations with the design, and we appreciate their quick responses. We got a lot of value for our money, and looking forward to our next project with them.

Name Surname  
*Designation*

---

## Spoorti

The team is always prompt, capable and very easy to deal with. Highly result yielding web solution at great prices - Addpro, we look forward to continued association with you.

Mr. Purohit  
*Managing director*

REACH ADDPRO NETWORK PVT. LTD.



## Bangalore

No. 222, 2nd Floor, 10"E" Main, 1st Block,  
HRBR Layout, Kalyan Nagar,  
Bangalore - 560043.

## Coimbatore

Innovspace Business Accelerator  
277/1A, Annamalai Industrial Park, Off SITRA  
Kalapatti Road, Kalapatti, Coimbatore,  
Tamil Nadu 641048

## Hyderabad

LIG 811, Road No. 5,  
Kukatpally,  
Hyderabad. - 500070

## USA

No. 320, Forest Dr,  
Edison, New Jersey  
U S A- 08817  
Mobile : +1 201 744 0036

## Chennai

No 924, Poonamallee HighRoad  
Kilpauk, Chennai  
Tamil Nadu - 600084.



+91 80 605 08111

+91 80 654 72176

+91 96 860 73073

[info@addpronetwork.com](mailto:info@addpronetwork.com)